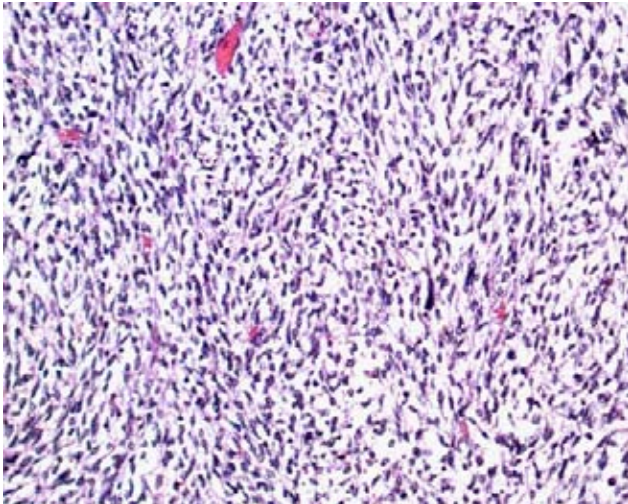
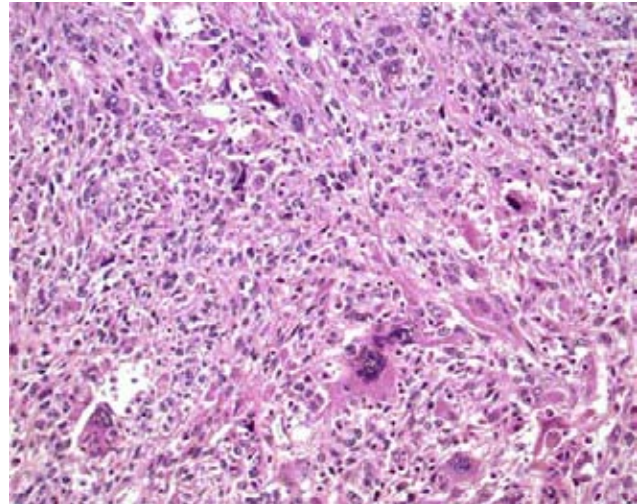


Images in Hepatology

Embryonal sarcoma of the liver in a young woman

Ana Claudia Sánchez-Aguilar; Óscar Díaz-Flores; Jorge Albores-Saavedra

**Figure 1.** Fascicles of spindle shaped cells with hyperchromatic nuclei.**Figure 2.** Multinucleated giant cells are mixed with fusiform cells.

A 26 year old woman presented with epigastric and right upper quadrant pain as well as hepatomegaly. A computed tomography revealed a 4 x 5 cm mass in the right hepatic lobe. Laboratory data were unremarkable. A needle biopsy of the hepatic mass was interpreted as pleomorphic sarcoma. A right hepatic lobectomy three months later showed a 6 x 5 x 2.8 cm, well demarcated, gray white, firm mass with necrosis of variable extent.

The microscopic features of the tumor shown in *figures 1 and 2*. It is composed of fascicles of spindle shaped cells mixed with anaplastic multinucleated giant cells. Myxoid areas and numerous eosinophilic globules were also seen. The tumor cells showed immunoreactivity for vimentin and were negative for cytokeratin, alpha fetoprotein, epithelial membrane antigen, actin and CD34.¹

The histologic features and immunohistochemical profile are characteristic of embryonal sarcoma of the liver.

More than half of the patients with this tumor are between 6 and 10 years of age. Cases in adults are rare. The prognosis is poor although in recent years it has improved with combined modality treatment.²

References

1. Stocker JT, Ishak KG. Undifferentiated (embryonal) sarcoma of the liver: report of 31 cases. *Cancer* 1978; 42: 336-348.
2. Lack EE, Schloo BL, Azumi N, Travis WD, Grier HE, Kozakewich HP. Undifferentiated (embryonal) sarcoma of the liver. Clinical and pathological study of 16 cases with emphasis on immunohistochemical features. *Am J Surg Pathol* 1991; 15: 1-16.

www.medigraphic.com

Department of Pathology. Medica Sur Clinic & Foundation.
Mexico City, Mexico.

Address for correspondence:

Dr. Jorge Albores-Saavedra. Department of Pathology Medica Sur Clinic & Foundation, Puente de Piedra 150, Col. Toriello Guerra, Tlalpan 14050, Mexico City, Mexico
E-mail: jalboress@medicasur.org.mx

Manuscript received and accepted: 26 December 2008.