

Usefulness of serum thyroid-stimulation hormone (TSH) as a prognostic indicator for acute-on-chronic liver failure

Yichen Wu,^{*,†} Shaoli You,[†] Hong Zang,[†] Hongling Liu,[†] Yuanli Mao,[‡] Panyong Mao,[§] Bing Zhu,[†] Jun Xu,[‡] Guoming Xie,[§] Jingxia Guo,[‡] Dongze Li,[†] Shaojie Xin,^{*,†} Zhihong Wan[†]

^{*} Medical School of Chinese PLA, Beijing, China.

[†] Liver Failure Treatment and Research Center, 302 Military Hospital of China, Beijing, China.

[‡] Clinical Laboratory Center, 302 Military Hospital of China, Beijing, China.

[§] Research and Technology Service Center, 302 Military Hospital of China, Beijing, China.

ABSTRACT

Background and rationale for the study. To investigate thyroid function in patients with acute-on-chronic liver failure (ACLF) caused by hepatitis B virus infection and to determine whether thyroid hormone levels can be used as prognostic markers for assessing severity and prognosis of ACLF patients. We enrolled 75 patients with ACLF and 70 patients with chronic hepatitis B (CHB). Continual serum samples were collected during hospitalization from the ACLF patients. The serum thyroid hormone levels (triiodothyronine [T3], thyroxine [T4], free (F)-T3, FT4, and thyroid stimulation hormone [TSH]) were measured by chemiluminescence. The Model for End-stage Liver Disease (MELD) score was used to assess severity. **Results.** ACLF patients showed significantly ($p < 0.001$) lower values of serum T3, T4, FT3/FT4 and TSH than CHB patients. The T3, T4, and TSH levels in ACLF patients were negatively correlated with the MELD score (T3: $r = -0.495$, $p < 0.001$; T4: $r = -0.281$, $p < 0.001$; TSH: $r = -0.498$, $p < 0.001$), suggesting that serum thyroid hormone levels reflect disease severity. At 1 year, 31 patients died. The T3 ($p = 0.016$), T4 ($p = 0.008$), and TSH ($p = 0.003$) levels in non-survivors were significantly lower than in survivors. The serum TSH level was a significant factor for predicting mortality in ACLF patients (optimal cutoff value = 0.38 IU/mL). The cumulative survival rate was decreased significantly when the serum TSH level was < 0.38 IU/mL (39.2%, $p < 0.001$). **Conclusion.** Serum TSH level may be a useful indicator for assessing severity and prognosis in ACLF patients.

Key words. Acute-on-chronic liver failure. Hepatitis B. Thyroid hormones. Prognosis.

INTRODUCTION

The liver plays an important role in thyroid hormone metabolism, specifically in its conjugation, excretion, and mono-de-iodination. Liver disease can affect thyroid hormone metabolism. Altered thyroid hormone metabolism resulting in a low serum triio-

dothyronine (T3), normal to low thyroxine (T4), a high reverse T3 (rT3) with an inappropriately normal thyroid stimulation hormone (TSH) in the absence of clinical hypothyroidism is well documented in chronic and cirrhotic liver diseases of various etiologies, such as hepatitis virus infection,¹⁻⁴ alcoholic,^{3,4} autoimmunization,^{4,5} non-alcoholic fatty liver disease,^{5,6} haemochromatosis,³ and cryptogenic.^{3,4} These specific thyroid alterations cause euthyroid sick syndrome.

Acute-on-chronic liver failure (ACLF) affects patients with previously well-compensated liver disease in whom an acute decompensation of liver function occurs due to a precipitating event.⁷ In China, hepatitis B virus (HBV)-infected ACLF patients account for $> 80\%$ of ACLF patients, because of the high incidence of chronic HBV infection.^{8,9} The progressive nature of ACLF affects many organ systems. However, data on thyroid hormone changes in patients with HBV-related ACLF are lacking.

Correspondence and reprint request: Shaojie Xin, M.D.
Medical School of Chinese PLA, 28 Fuxing Road, Beijing, China, 100853.
Tel.: 01186-10-66933434. Fax: 01186-10-66933434
E-mail: xinshaojie302@163.com

Correspondence and reprint request: Zhihong Wan, Ph. D.
Liver Failure Treatment and Research Center,
302 Military Hospital of China, 100 Middle Section of West 4th Ring Road,
Beijing, China, 100039.
Tel.: 01186-10-66933392. Fax: 01186-10-63879339
E-mail: wanzhihong302@163.com

*Manuscript received: August 18, 2014.
Manuscript accepted: September 15, 2014.*

The Model for End-stage Liver Disease (MELD) score is commonly used to classify the severity of liver impairment and to predict the mortality of liver diseases. Previous studies addressed changes in thyroid hormone levels in relation to the Child-Pugh classification scheme in patients with cirrhotic liver diseases,¹⁰⁻¹¹ but few studies have addressed the relationship with the MELD score.

Furthermore, thyroid hormones are potent mediators of multiple physiological processes. The liver is a typical target organ of thyroid hormones; therefore, the alterations of thyroid hormones can affect liver function. Previous studies reported that serum T3 concentrations may be a useful indicator for assessing the severity and prognosis of patients with liver diseases.¹²⁻¹⁵ However, the usefulness of serum thyroid hormones as a prognostic index remains to be established in ACLF patients.

The purposes of this study were to investigate whether serum thyroid hormone levels (T3, T4, free (F)-T3, FT4, and thyroid stimulation hormone [TSH]) were changed in ACLF patients and to determine whether thyroid hormone levels can be used as prognostic markers for assessing severity and prognosis in ACLF patients.

MATERIAL AND METHODS

The protocol was approved by the Ethical Committee of Beijing 302 Hospital. All procedures were followed in accordance with the ethical standards of the responsible committee on human experimentation (institutional and national) and with the Helsinki Declaration of 1975, as revised in 2008. Informed consent was obtained from all included study patients.

Subjects

We enrolled 75 consecutive patients with HBV-related ACLF and 70 patients with chronic hepatitis B (CHB) at the Beijing 302 Hospital from January 2012 to June 2012. ACLF is defined as acute liver decompensating on the basis of chronic liver disease with mandatory jaundice (serum total bilirubin > 171.0 $\mu\text{mol/L}$ or a rapid rise > 17.1 $\mu\text{mol/L/day}$), coagulopathy (plasma prothrombin activity < 40%), and the recent development of complications.¹⁶ Patients with CHB met the diagnostic criteria of CHB according to the 2000 Xi'an viral hepatitis management scheme.¹⁷

The exclusion criteria were cardiac dysfunction, respiratory dysfunction, renal dysfunction, cancer, primary thyroid diseases, smoking, alcoholism, and those being treated with thyroid hormones or anabolic drugs.

Samples

Serum samples of all patients were collected at admission. ACLF patients were followed for 1 year, and serum thyroid hormones were measured during hospitalization for these patients. A total of 358 blood samples were collected.

Biochemical assay

The biochemical parameters were routinely performed in the Central Clinical Laboratory of Beijing 302 Hospital. The T3, T4, FT3, FT4, and TSH levels were determined by chemiluminescence (VITROS reference nos. 1322528, 8744468, 1315589, 1387000, and 1912997; VITROS 3600 System; Ortho-Clinical Diagnostics, Rochester, NY, USA). Patient severity was assessed using the MELD score, which was calculated from the following formula: MELD Score = $9.6 \times \ln(\text{creatinine} [\text{mg/dL}]) + 3.8 \times \ln(\text{bilirubin} [\text{mg/dL}]) + 11.2 \times \ln(\text{international normalized ratio [INR]}) + 6.4$.¹⁸

Statistical analysis

All statistical analyses were performed using the Statistical Package for Social Science (SPSS), version 16.0 (SPSS, Inc., Chicago, IL, USA). Data were expressed as mean \pm standard deviation (SD). Comparisons between the two groups were made using the Student's *t*-test for continuous variables. Categorical data were compared using the χ^2 test. Correlations between two parameters were determined by using Pearson's correlation coefficient (*r*). Cox's regression analyses were performed to identify which of the following factors were predictive of mortality in ACLF patients: age, sex, T3, T4, and TSH. Variables that reached statistical significance ($p < 0.1$) by univariate analyses were subjected to multivariate analysis in order to identify predictors of the prognosis. We also determined the sensitivity and specificity of the TSH level for predicting the prognosis of ACLF patients by using receiver operating characteristic (ROC) curves. The Kaplan-Meier method and log rank test were adopted to test the survival differences. $P < 0.05$ was considered as significant.

RESULTS

Comparison of clinical parameters between ACLF and CHB patients

We enrolled 68 men and 7 women with ACLF due to hepatitis B infection (mean age: 42.8 ± 11.2 years) and 64 men and 6 women with CHB (mean age: 39.6 ± 7.2 years). HBV-infected ACLF patients showed lower values of serum T3 (0.80 ± 0.31 nmol/L, $p < 0.001$), T4 (64.7 ± 32.8 nmol/L, $p < 0.001$), FT3/FT4 (0.19 ± 0.08 , $p < 0.001$), and TSH (0.74 ± 0.75 IU/mL, $p < 0.001$) levels than the CHB patients (Table 1).

Correlations between the MELD score and thyroid hormones

The MELD score was significantly correlated with the T3, T4, FT3, FT4, FT3/FT4, and TSH levels. There was a reverse correlation between the MELD score and the T3 ($r = -0.495$, $p < 0.001$), T4 ($r = -0.281$, $p < 0.001$), FT3 ($r = -0.219$, $p = 0.012$), FT3/FT4 ($r = -0.444$, $p < 0.001$), and TSH ($r = -0.498$, $p < 0.001$) levels, whereas there was a positive correlation between the MELD score and the FT4 ($r = 0.286$, $p < 0.001$) level (Table 2, Figure 1).

Thyroid hormone levels and mortality of the ACLF patients

ACLF patients were followed for 1 year, and 31 patients died during that period. The serum levels of

T3 (0.56 ± 0.20 nmol/L, $p = 0.016$), T4 (39.4 ± 19.0 nmol/L, $p = 0.008$), and TSH (0.19 ± 0.30 IU/mL, $p = 0.002$) in non-survivors were significantly lower than those in survivors (Table 3).

Age, T3, T4, and TSH levels were significant factors for predicting mortality according to the univariate Cox's regression analysis, and serum TSH level (odds ratio [OR], 0.16; 95% confidence interval [CI], 0.038-0.656; $p = 0.0111$) was a significant factor for predicting mortality according to multivariate regression analysis (Table 4). Receiver operating characteristic curve (ROC) analysis was performed (Figure 2), and the area under the curve (AUCs) for the TSH was 0.698 (95% CI: 0.581-0.799; $p = 0.0011$). With an optimal cutoff value of 0.38 IU/mL, the sensitivity and specificity for predicting mortality were 91.2 and 51.2%, respectively. The cumulative survival rate of the ACLF patients differed significantly when all enrolled patients were classified according to the cutoff value ($p < 0.001$). The survival rate was 39.2% when serum TSH levels were ≤ 0.38 IU/mL, and the survival rate was 87.5% when serum TSH levels were > 0.38 IU/mL (Figure 3). Our results suggested that the serum TSH concentration may be used as a parameter for prognosis, because the low level reflected an extremely poor prognosis.

DISCUSSION

It has been increasingly evident that several conditions other than thyroid disease change the concentrations of thyroid hormones. Many studies

Table 1 Levels of thyroid hormones in patients with acute-on-chronic liver failure (ACLF) and chronic hepatitis B (CHB).

Variable	ACLF	CHB	p
Age (years)	42.8 ± 11.2	39.6 ± 7.2	0.063
Sex			
Male	68	7	0.684
Female	64	6	
ALT (IU/mL)	133.6 ± 225.1	61.5 ± 90.3	<0.001
Albumin (g/L)	29.9 ± 3.9	40.4 ± 3.2	<0.001
Bilirubin (μ mol/L)	305.2 ± 158.0	11.7 ± 4.9	<0.001
CHE	3228 ± 1565	7326 ± 1885	<0.001
INR	1.96 ± 3.46	1.00 ± 0.05	<0.001
T3 (nmol/L)	0.80 ± 0.31	2.05 ± 0.39	<0.001
T4 (nmol/L)	64.7 ± 32.8	108.5 ± 28.7	<0.001
FT3 (pmol/L)	4.6 ± 1.4	5.2 ± 0.9	<0.001
FT4 (pmol/L)	25.9 ± 8.0	14.3 ± 2.6	<0.001
FT3/FT4	0.19 ± 0.08	0.37 ± 0.10	<0.001
TSH (IU/mL)	0.74 ± 0.75	1.98 ± 1.21	<0.001

ALT: alanine aminotransferase. CHE: cholinesterase. INR: international normalized ratio's, thyroid stimulation hormone.

Table 2 Correlation coefficients between the Model for End-stage Liver Disease (MELD) score and thyroid hormones.

MELD score	T3	T4	FT3	FT4	FT3/FT4	TSH
r	-0.495	-0.281	-0.219	0.286	-0.444	-0.498
p	<0.001	<0.001	0.012	<0.001	<0.001	<0.001

TSH: thyroid stimulation hormone. The correlations between two parameters were determined by Pearson's correlation coefficient.

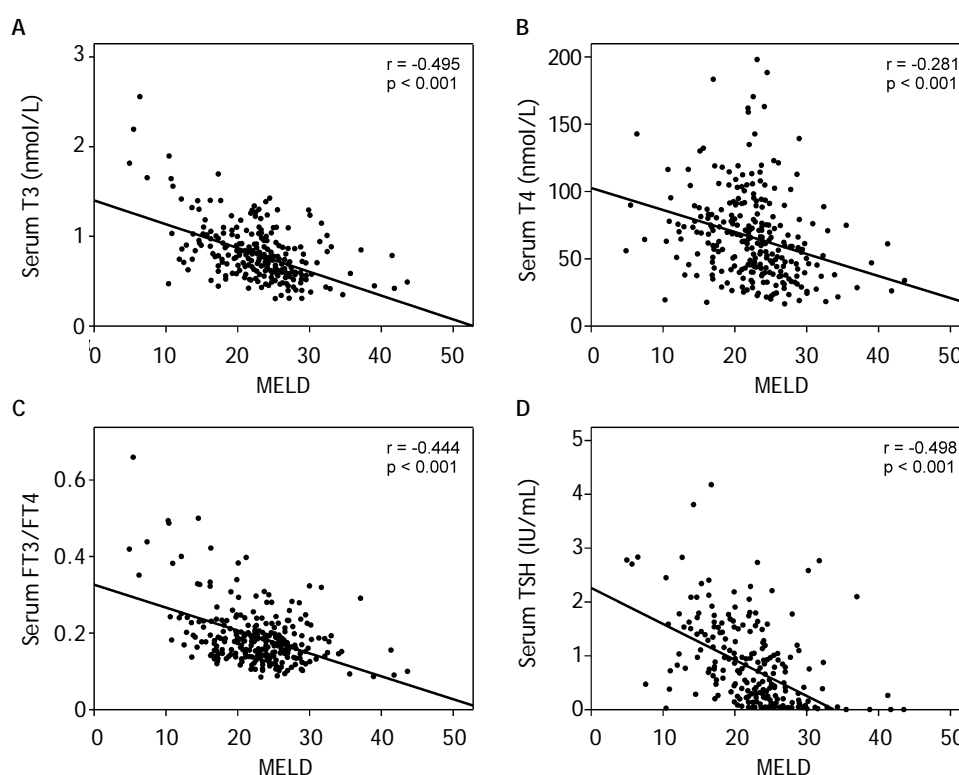


Figure 1. Scatter plots of serum T3 and the Model for End-stage Liver Disease (MELD) score (A); serum T4 and the MELD score (B); serum FT3/FT4 and the MELD score (C); and serum thyroid stimulation hormone (TSH) and MELD score (D).

Table 3 Comparison of thyroid hormones levels in non-survivors and survivors.

Patients	Non-survivors	Survivors	p
T3 (nmol/L)	0.56 ± 0.20	0.66 ± 0.18	0.016
T4 (nmol/L)	39.4 ± 19.0	53.9 ± 26.9	0.008
FT3 (pmol/L)	3.7 ± 1.05	3.7 ± 0.7	
FT4 (pmol/L)	30.5 ± 9.4	30.0 ± 8.1	
FT3/FT4	0.15 ± 0.06	0.15 ± 0.05	
TSH (IU/mL)	0.19 ± 0.30	0.45 ± 0.46	0.002

TSH: thyroid stimulation hormone.

have demonstrated that severe systemic nonthyroid disease, including chronic and cirrhotic liver diseases, induce several abnormalities in thyroid function tests, which is probably a result of low serum T3, normal to low T4 with normal TSH (i.e., euthyroid sick syndrome).¹⁻⁶

In our studies, serum T3, T4, FT3, FT3/FT4, and TSH concentration was significantly decreased in HBV-infected ACLF patients, suggesting that euthyroid sick syndrome may have occurred in these patients. Overall, the serum thyroid hormone concentrations appeared to parallel the severity of

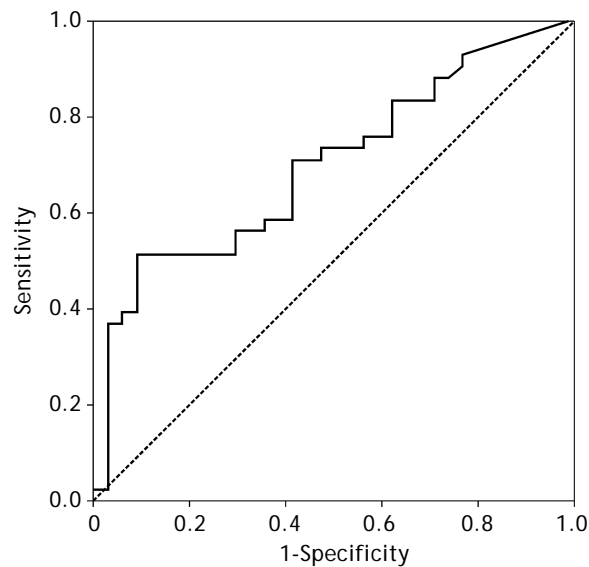


Figure 2. Receiver operating characteristic curve of serum thyroid stimulation hormone for predicting the prognosis of patients with acute-on-chronic liver failure.

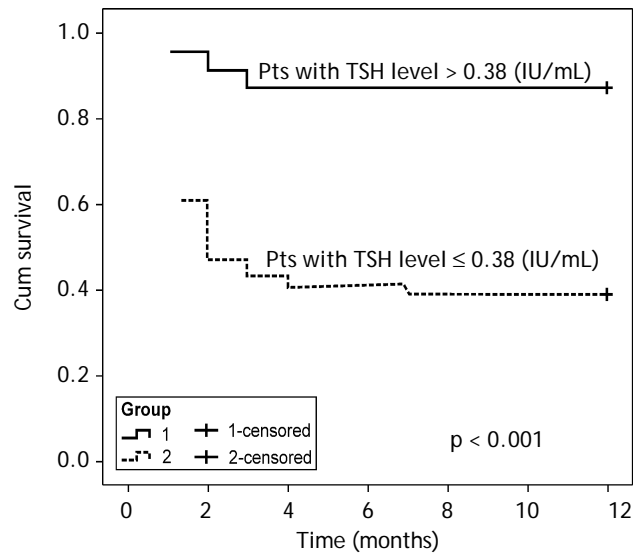


Figure 3. Kaplan-Meier curves showing mortality in acute-on-chronic liver failure patients with serum thyroid stimulation hormone (TSH) levels of > 0.38 IU/mL or ≤ 0.38 (IU/mL).

Table 4 Cox’s regression analyses for mortality in patients with acute-on-chronic liver failure.

Variable	Rating	p (univariate)	p (multivariate)	OR (95% CI)
Age	years	0.0003	0.0064	1.06 (1.015-1.097)
Sex	0, female 1, male	0.0504	0.1027	
T3	nmol/L	0.0676	0.2076	
T4	nmol/L	0.0411	0.1105	
TSH	IU/mL	0.006	0.0111	0.16 (0.038-0.656)

OR: odds ratio. CI: confidence interval. TSH: thyroid stimulation hormone.

liver dysfunction, which is similar to the results of previous studies on cirrhotic liver diseases.^{1,2} These, observed alterations in the thyroid hormones are generally believed to be part of the acute adaptive mechanisms of the individual. The liver plays an important role in thyroid hormone metabolism, and liver disease can affect thyroid hormone metabolism. ACLF is associated with massive cell death, which may be responsible for the altered metabolism of T4 and its metabolic products. Greater than 80% of serum T3 is produced by peripheral deiodination. Parenchymal liver damage in ACLF patients may decrease T3 generation due to the impaired conversion of T4 to T3 in the liver.¹⁹

Earlier studies have indicated the interrelationship of hypothalamic dysfunction and the degree of liver impairment. It has been demonstrated that an increased impairment of the hypothalamic-pituitary-adrenal axis existed according to the severity of cirrhosis. While serum TSH concentration was normal, the function of the hypothalamic-pituitary-thyroid axis was not altered markedly.²⁰ In our study, the serum T3 and T4 concentration decreased in ACLF patients, while the serum TSH concentration decreased significantly. These findings indicated that hypothalamic-pituitary-thyroid axis dysfunction may exist in ACLF patients. Although the underlying mechanisms of the suppression of the

hypothalamic-pituitary-thyroid axis in ACLF are not yet known, an increase in levels of cytokines such as interleukin-1, interleukin-6, and tumor necrosis factor, as well as alterations in hepatic steroid metabolism may play a role.²¹⁻²⁵

Previous studies have reported that serum T3 concentrations can indicate the severity and prognosis of patients with cirrhotic liver diseases.¹²⁻¹⁵ In our study, the TSH was regarded as a more sensitive marker than T3, T4, FT3, FT4, and FT3/FT4, suggesting that it is a useful indicator for assessing severity, and it may play an important role in elucidating the prognosis of ACLF patients.

Thyroid hormones are potent mediators of multiple physiological processes, including embryonic development, cellular differentiation, metabolism, and cell growth.¹³⁻¹⁴ In addition to their crucial roles in maintaining cellular homeostasis, abnormal thyroid hormones can cause multiple disorders, including cardiovascular disease,^{26,27} diabetes mellitus,^{28,29} and liver disease.¹⁻⁶ The liver is a typical target organ of thyroid hormones. Equal amounts of the thyroid hormone receptors $\alpha 1$ and $\beta 1$ antagonists are expressed in human hepatocytes.³⁰ Previous studies reported that treatment with T3 analogs prevents hepatic statuses and hepatitis.^{15,31-37} The multipotent functions of the thyroid hormones and thyroid hormone receptors are variable, but they are essential for normal growth and proliferation of the liver. In our study, the serum T3, T4, FT3, and TSH levels were significantly decreased in ACLF patients, and they paralleled the severity of liver dysfunction. The serum T3, T4, and TSH levels in non-survivors were significantly lower than those in survivors. Thus, further investigation is required on whether the treatment of thyroid hormones analogs is needed in ACLF patients.

CONCLUSION

Our study suggested that serum levels of thyroid hormones were altered in ACLF patients and were related to the severity of the diseases. The serum TSH levels may be a useful indicator for assessing severity and prognosis in ACLF.

ABBREVIATIONS

- **ACLF:** acute-on-chronic liver failure.
- **AUCs:** area under the curve.
- **CHB:** chronic hepatitis B.
- **CI:** confidence interval.
- **HBV:** hepatitis B virus.

- **MELD:** Model for End-stage Liver Disease.
- **OR:** odds ratio.
- **ROC:** receiver operating characteristic curve.
- **SD:** standard deviation.
- **SPSS:** Statistical Package for Social Science.
- **T3:** triiodothyronine.
- **T4:** thyroxine.
- **TSH:** thyroid-stimulation hormone.

SOURCE OF FUNDING

This study was supported by the 12th Five-Year National Science and Technology Major Project for Infectious Diseases (No: 2012ZX10002004-005) and the 12th Five-Year Grand Project of PLA (No: BWS11J075).

CONFLICTS OF INTEREST

None.

REFERENCES

1. Antonelli A, Ferri C, Pampana A, Fallahi P, Nesti C, Pasquini M, Marchi S, et al. Thyroid disorders in chronic hepatitis C. *Am J Med* 2004; 117: 10-3.
2. Antonelli A, Ferri C, Fallahi P, Ferrari SM, Ghinoi A, Rotondi M, Ferrannini E. Thyroid disorders in chronic hepatitis C virus infection. *Thyroid* 2006; 16: 563-72.
3. Borzio M, Caldara R, Borzio F, Piepoli V, Rampini P, Ferrari C. Thyroid function tests in chronic liver disease: evidence for multiple abnormalities despite clinical euthyroidism. *Gut* 1983; 24: 631-6.
4. Oren R, Sikuler E, Wong F, Blendis LM, Halpern Z. The effects of hypothyroidism on liver status of cirrhotic patients. *J Clin Gastroenterol* 2000; 31: 162-3.
5. Silveira MG, Mendes FD, Diehl NN, Enders FT, Lindor KD. Thyroid dysfunction in primary biliary cirrhosis, primary sclerosing cholangitis and non-alcoholic fatty liver disease. *Liver Int* 2009; 29: 1094-100.
6. Carulli L, Ballestri S, Lonardo A, Lami F, Violi E, Losi L, Bonilauri L, et al. Is nonalcoholic steatohepatitis associated with a high-through-normal thyroid stimulating hormone level and lower cholesterol levels? *Intern Emerg Med* 2013; 8: 297-305.
7. Sarin SK, Kumar A, Almeida JA, Chawla YK, Fan ST, Garg H, de Silva HJ, et al. Acute-on-chronic liver failure; consensus recommendations of the Asian Pacific Association for the Study of the Liver (APASL). *Hepatol Int* 2009; 3: 269-82.
8. Ke WM, Ye YN, Huang S. Discriminate function for prognostic indexes and probability of death in chronic severe hepatitis B. *J Gastroenterol* 2003; 38: 861-4.
9. You SL, Rong YH, Zhu B, Zhang AM, Zang H, Liu HL, Dongze L, et al. Changing etiology of liver failure in 3,916 patients from northern China: a 10-year survey. *Hepatol Int* 2013; 7: 714-20.
10. Baruch Y, Assry N, Amit T, Krivoy N, Strickovsky D, Orr ZS, Hochberg Z. Spontaneous pulsatility and pharmacokinetics of growth hormone in liver cirrhotic patients. *J Hepatol* 1998; 29: 559-64.
11. Caregaro L, Alberino F, Amodio P, Merkel C, Angeli P, Plebani M, Angelo Gatta. Nutritional and prognostic signifi-

- cance of serum hypothyroxinemia in hospitalized patients with liver cirrhosis. *J Hepatol* 1998; 28: 115-21.
12. Kabadi UM, Premachandra BN. Serum T3 and reverse T3 levels in hepatic cirrhosis: relation to hepatocellular damage and normalization on improvement in liver dysfunction. *Am J Gastroenterol* 1983; 78: 750-5.
 13. Huang YH, Tsai MM, Lin KH. Thyroid hormone dependent regulation of target genes and their physiological significance. *Chang Gung Med J* 2008; 31: 325-34.
 14. Pilo A, Iervasi G, Vitek F, Ferdeghini M, Cazzuola F, Bianchi R. Thyroidal and peripheral production of 3,5,3'-triiodothyronine in humans by multicompartmental analysis. *Am J Physiol* 1990; 258: E715-E726.
 15. Mansour-Ghanaei F, Mehrdad M, Mortazavi S, Joukar F, Khak M, Atrkar-Roushan Z. Decreased serum total T3 level in hepatitis B and C related cirrhosis by severity of liver damage. *Ann Hepatol* 2012; 11: 667-71.
 16. Liver Failure and Artificial Liver Group, Chinese Society of Infectious Diseases, Chinese Medical Association; Severe Liver Diseases and Artificial Liver Group, Chinese Society of Hepatology, Chinese Medical Association. Diagnostic and treatment guidelines for liver failure. *Zhonghua Gan Zang Bing ZaZhi* 2006; 14: 643-6.
 17. Chinese Society of Infectious Diseases and Parasitology; Chinese Society of Hepatology. Management scheme of diagnostic and therapeutic criteria of viral hepatitis. *Zhonghua Gan Zang Bing ZaZhi* 2000; 8: 324-9.
 18. Kamath PS, Wiesner RH, Malinchoc M, Kremers W, Therneau TM, Kosberg CL, D'Amico G, et al. A model to predict survival in patients with end-stage liver disease. *Hepatol* 2001; 33: 464-70.
 19. Chopra IJ, Tecu GN, Mead JF, Huang TS, Beredo A, Solomon DH. Relationship between serum free fatty acids and thyroid hormone binding inhibitor in nonthyroid illnesses. *J Clin Endocrinol Metab* 1985; 60: 980-4.
 20. Zietz B, Lock G, Plach B, Drobnik W, Grossmann J, Scholmerich J, Straub RH. Dysfunction of the hypothalamic-pituitary-glandular axes and relation to Child-Pugh classification in male patients with alcoholic and virus-related cirrhosis. *Eur J Gastroenterol Hepatol* 2003; 15: 495-501.
 21. Tilg H, Wilmer A, Vogel W, Herold M, Nolchen B, Judmaier G, Huber C. Serum levels of cytokines in chronic liver diseases. *Gastroenterol* 1992; 103: 264-74.
 22. Jones TH, Kennedy RL. Cytokines and hypothalamic-pituitary function. *Cytokine* 1993; 5: 531-8.
 23. del Rey A, Furukawa H, Monge-Arditi G, Kabiersch A, Voigt KH, Besedovsky HO. Alterations in the pituitary-adrenal axis of adult mice following neonatal exposure to interleukin-1. *Brain Behav Immun* 1996; 10: 235-48.
 24. Wiest R, Das S, Cadelina G, Garcia-Tsao G, Milstien S, Grossmann RJ. Bacterial translocation in cirrhotic rats stimulates eNOS-derived NO production and impairs mesenteric vascular contractility. *J Clin Invest* 1999; 104: 1223-33.
 25. Vogeser M, Fischer G, Jacob K. Quantification of cortisol inactivation in cirrhosis of the liver. *Exp Clin Endocrinol Diabetes* 1998; 106: 410-4.
 26. Tatar E, Kircelli F, Asci G, Carrero JJ, Gungor O, Demirci MS, Ozbek SS, et al. Associations of triiodothyronine levels with carotid atherosclerosis and arterial stiffness in hemodialysis patients. *Clin J Am Soc Nephrol* 2011; 6: 2240-6.
 27. Tatar E, Sezis Demirci M, Kircelli F, Gungor O, Yaprak M, Asci G, Basci A, et al. The association between thyroid hormones and arterial stiffness in peritoneal dialysis patients. *Int Urol Nephrol* 2012; 44: 601-6.
 28. Feely J, Isles TE. Screening for thyroid dysfunction in diabetics. *Br Med J* 1979; 1: 1678.
 29. Gray RS, Irvine WJ, Clarke BF. Screening for thyroid dysfunction in diabetics. *Br Med J* 1979; 2: 1439.
 30. Chamba A, Neuberger J, Strain A, Hopkins J, Sheppard MC, Franklyn JA. Expression and function of thyroid hormone receptor variants in normal and chronically diseased human liver. *J Clin Endocrinol Metab* 1996; 81:360-7.
 31. Liangpunsakul S, Chalasani N. Is hypothyroidism a risk factor for non-alcoholic steatohepatitis? *J Clin Gastroenterol* 2003; 37: 340-3.
 32. Perra A, Simbula G, Simbula M, Pibiri M, Kowalik MA, Sulas P, Cocco MT, et al. Thyroid hormone (T3) and TRbeta-agonist GC-1 inhibit/reverse nonalcoholic fatty liver in rats. *FASEB J* 2008; 22: 2981-9.
 33. Cable EE, Finn PD, Stebbins JW, Hou J, Ito BR, van Poelje PD, Linemeyer DL, et al. Reduction of hepatic steatosis in rats and mice after treatment with a liver-targeted thyroid hormone receptor agonist. *Hepatol* 2009; 49: 407-17.
 34. Akino K, Akita S, Mizuguchi T, Takumi I, Yu R, Wang XY, Rozga J, et al. A novel molecular marker of pituitary tumor transforming gene involves in a rat liver regeneration. *J Surg Res* 2005; 129: 142-6.
 35. Mollica MP, Lionetti L, Moreno M, Lombardi A, De Lange P, Antonelli A, Lanni A, et al. 3,5-diiodo-L-thyronine, by modulating mitochondrial functions, reverses hepatic fat accumulation in rats fed a high-fat diet. *J Hepatol* 2009; 51: 363-70.
 36. Naehrlich L, Dörr HG, Bagheri-Behrouzi A, Rauh M. Iodine deficiency and subclinical hypothyroidism are common in cystic fibrosis patients. *J Trace Elem Med Biol* 2013; 27: 122-5.
 37. Itoh S, Matsuo S, Oda T, Marutani K, Sasaki K. Triiodothyronine level and triiodothyronine/thyroxine ratio in HBeAg-positive chronic hepatitis patients treated with prednisolone withdrawal. *Dig Dis Sci* 1990; 35: 1110-4.