

Received:
21-IX-2020

Fracture Resistance of Teeth Restored with Bulk-Fill and Fiber-Reinforced Composites in Class II Cavities

Accepted:
4-XII-2020

Published Online:
16-XII-2020

Resistencia a la fractura de dientes restaurados con resinas de relleno y resinas reforzadas con fibra en cavidades clase II

Gül Keskin DDS,PhD¹; Zübeyde Uçar Gündoğar DDS,PhD²; Gün Burak Tek DDS³

1. Assist. Prof. Dr., Department of Pediatric Dentistry, Faculty of Dentistry, Gaziantep University, Gaziantep, Turkey. <http://orcid.org/0000-0003-4569-7174>

2. Assist. Prof. Dr., Department of Pediatric Dentistry, Faculty of Dentistry, Gaziantep University, Gaziantep, Turkey. <http://orcid.org/0000-0002-3402-5332>

3. Dt., Department of Pediatric Dentistry, Faculty of Dentistry, Faculty of Dentistry, Gaziantep University, Gaziantep, Turkey. <http://orcid.org/0000-0001-8203-1828>

Correspondence to: Dr. Gül Keskin - gulbeyret@hotmail.com

ABSTRACT: This study aimed to evaluate the fracture resistance of teeth restored with conventional, bulk-fill, and fiber-reinforced composite materials regarding intact teeth. Standard cavities were prepared on 70 sound third molar teeth. The teeth were randomly divided into six groups: intact teeth, conventional Bis-GMA based composite, fiber-reinforced composite, Bis-GMA based bulk-fill composite, ormocer based bulk-fill composite, glass containing resin-based bulk-fill composite. The data was obtained by a Universal Testing Machine and analyzed statistically. Fracture resistance of the teeth restored with conventional composite was significantly lower than the other groups ($p<0.05$). The teeth restored with fiber-reinforced composite showed the highest fracture resistance; however, there were no statistically significant differences between intact teeth and teeth restored with fiber-reinforced composite, Bis-GMA based bulk-fill composite, and glass containing resin-based bulk-fill composite ($p>0.05$). The obtained data showed that restoring teeth with bulk-fill and fiber-reinforced composites could be recommended in Class II cavities.

KEYWORDS: Fracture resistance; Fiber-reinforced; Bulk-fill; Composite; Class II cavity; Dental materials.

RESUMEN: El objetivo del presente estudio fue evaluar la resistencia a la fractura de los dientes restaurados con materiales compuestos convencionales, de relleno y reforzados con fibras, en relación con los dientes intactos. Se prepararon cavidades estándar en 70 dientes de terceros molares sanos. Los dientes se dividieron al azar en seis grupos: dientes intactos, compuesto convencional basado en Bis-GMA, compuesto reforzado con fibra, compuesto de relleno a base de Bis-GMA, compuesto de relleno a base de ormocer, compuesto de relleno a base de vidrio que contiene resina. Los resultados fueron obtenidos utilizando una máquina universal de pruebas y analizados estadísticamente. La resistencia a la fractura de los dientes restaurados con el composite convencional fue significativamente menor que la de los otros grupos ($p < 0,05$). Los dientes restaurados con un compuesto reforzado con fibra mostraron la mayor resistencia a la fractura; sin embargo, no hubo diferencias estadísticamente significativas entre los dientes intactos y los dientes restaurados con un compuesto reforzado con fibra, un compuesto de relleno a base de Bis-GMA y un compuesto de relleno a base de resina de vidrio ($p > 0,05$). Los datos obtenidos mostraron que la restauración de dientes con composites de relleno y reforzados con fibra podría ser recomendada en cavidades de Clase II.

PALABRAS CLAVE: Resistencia a la fractura; Refuerzo con fibra; Bulk-fill; Resina; Cavidad de clase II; Materiales dentales.

INTRODUCTION

Composite resins are restorative materials frequently used in restorative dentistry and have advantages such as improved esthetic-mechanical properties and controllable curing time. However, the volumetric shrinkage that occurs during polymerization is an important problem about these materials (1). Stress caused by shrinkage can cause marginal defects, enamel fractures, cuspal movements, and cuspal fractures. These situations may subsequently cause microleakage, postoperative sensitivity, and secondary caries, respectively (2). Shrinkage stress can be affected by many factors such as cavity configuration (C-factor, cavity size, compliance of the cavity wall), material properties (polymerization shrinkage, matrix formulation, filler content, elastic modulus, the viscosity of the resin), and restoration technique (horizontal incremental pattern, oblique incremental pattern, bulk-fill) (3,4). Conventional resin composites should be placed in increments of up to 2mm to achieve acceptable

resin properties and reduce shrinkage stress (5). However, this technique has some disadvantages, such as intermediate layer contamination, difficulty maintaining isolation, and increased operational time (6). Clinicians prefer simple approaches to save time and reduce the possibility of failure. Recently, bulk-fill composites have been manufactured to provide similar shrinkage stresses obtained with conventional incrementally placed composites but can be applied in thicker amounts, such as 4 to 5mm (7). Different photoinitiator ingredients and increased translucency of bulk-fill composites have provided a deeper cure and additional light penetration (8). Stress-relaxant polymerization modulators, prepolymer stress relievers, and high-molecular-weight base monomers have been incorporated in bulk-fill materials to minimize stress formation in restorations (9).

Material composition is as important as filling techniques to minimize polymerization shrinkage and its clinical effects (10). For this purpose,

restorative materials with different compositions were produced. One of these is ormocer-based composite materials (Organic-Modified Ceramics), which have larger three-dimensional cross-linked ceramic polysiloxane monomer, and this structure provides less polymerization shrinkage (11). Another restorative material manufactured to reduce shrinkage stresses is short fiber-reinforced composites, which can be applied in bulk (4mm) with hardness close to dentin hardness (12). These materials containing less than 1wt% aluminoborosilicate glass are recommended as a base filling in large cavities and high-stress-bearing areas (13).

While some previously reported studies advocated that the bulk-fill resin composites exhibit lower contraction rates and polymerization contraction stress than conventional composite materials (14,15), others have demonstrated that in terms of shrinkage stress development, bulk fill has no advantage over conventional nanohybrid composites (16). Contraction stresses are influenced by many factors such as the composition and filler content of the resin composite, its ability to flow, and its elastic modulus (17). The fact that bulk-fill resin composites have different physical properties due to handling characteristics and varied composition, and conflicting results in the literature justifies further investigations on this matter. Therefore, this study was designed to determine the failure load of teeth restored using different resin composites in class II cavities. The null hypothesis is that; there will be no differences between the tested materials in terms of failure load.

MATERIAL AND METHODS

SAMPLE PREPARATION

Fifty non-carious third molars with a buccolingual width of 10.5 (\pm 0.5) mm were used for the study. The teeth were stored in 0.5% chloramine

solution at + 4°C for no longer than one month until the study started. Dental surfaces were examined with a stereomicroscope (Nikon, Tokyo, Japan) at \times 2 magnification to ensure no caries or intrinsic discoloration. Standard class II cavities were prepared using a flat-ended diamond fissure bur (6837-016) underwater cooling with a high-speed rotating tool. Cavity preparation was schematized in Figure 1. A new bur was used for each cavity. The inner edges of the cavities were rounded to reduce the C factor, and dimensions were confirmed with the aid of a periodontal probe. A single operator prepared all cavities, and another researcher confirmed the pre-restoration preparation parameters to ensure continuity and accuracy.

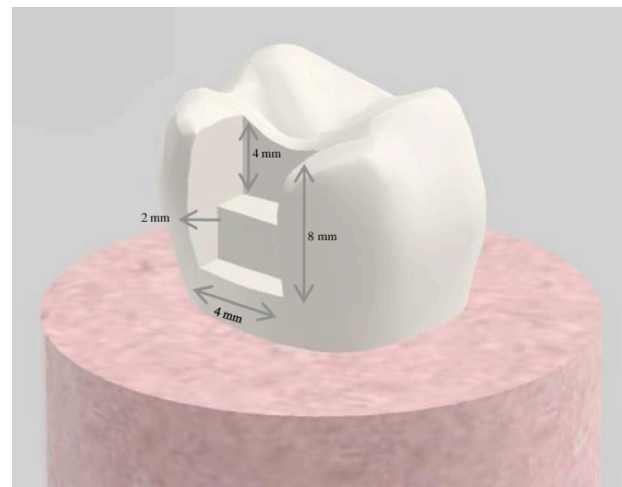


Figure 1. Diagram of the class II cavity.

RESTORATIVE PROCEDURE

The properties and application steps of the materials used in the restoration procedure are given in Table 1. Before each restoration, 37% phosphoric acid etching gel (Total etch; Ivoclar, Vivadent AG, Schaan, Liechtenstein) was applied on enamel and subsequently on dentin; and allowed a reaction time of 15 seconds and then G-Premio Bond (GC, Tokyo, Japan) was applied to the cavity walls. After drying with low-pressure air spray, it was polymerized using a LED light source with 1000 mW/cm²

standard power (Valo Cordless, Ultradent, South Jordan, UT, USA). A universal matrix band (Protect, Germany) was used to build up the proximal walls using the relevant composite resin of each group. The sample size was estimated based on a previous study conducted with Akbarian *et al.* (1). Samples were divided into 6 groups (n=10) according to the restorative material to be applied.

Group Control: intact teeth.

Group FI: Bis-GMA based nano filled composite [(Filtek Ultimate, 3M Oral Care, St Paul, MN, USA), (oblique layering incremental technique)] was incrementally applied with 2mm increments in each placement and light-cured for 20s to each layer.

Group EX: Fiber-reinforced composite (EverX Posterior, GC, Tokyo, Japan) was applied in bulk (4 mm) and light-cured for 10s. Then it was applied in 2mm more until for covering dentin and light-cured for 5 seconds. The remaining 2mm cavity was restored with Bis-GMA based nano filled composite as in group FI.

Group FB: Bulk-fill Bis-GMA based composite (Filtek Bulk Fill Posterior, 3M Oral Care, St Paul, MN, USA) was used for restoration in bulk (4mm), and the occlusal, buccal, and lingual surfaces of the material were light-cured for 10 seconds each. The increments were applied in two layers.

Group AB: Bulk-fill Ormocer based composite (AdmiraXtra Fusion, VOCO, Cuxhaven, Germany) was used for restoration in bulks (4mm) and light-cured 20 seconds each layer.

Group TB: A glass containing resin-based composite (TetricEvoCeram® Bulk Fill, Ivoclar, Vivadent AG, Schaan, Liechtenstein) was used for restoration in bulks (4mm) and light-cured

10 seconds to each layer. Finishing and polishing procedures of all restorations were performed 10 minutes after placing the composite resins.

PERIODONTAL LIGAMENT AND ALVEOLAR BONE SIMULATION

The root surface of each tooth was immersed into molten wax up to 2.0mm below the enamel-cement connection to obtain a 0.2 to 0.3mm thick wax layer to simulate the alveolar bone and periodontal ligament. The teeth were embedded in self-curing acrylic resin (Imicryl SC, Konya, Turkey) through cylindrical teflon molds. After resin polymerization, the teeth were removed, roots were cleaned and replaced using polyether impression material (Impregum Soft; 3M Oral Care, St Paul, MN, USA) (7,18).

MECHANICAL TESTING AND FRACTURE ANALYSIS

All samples were stored in distilled water at 37 °C for 24 hours. Fracture testing was immediately performed with a Universal Testing Machine (Shimadzu, Tokyo, Japan) after the teeth were removed from the distilled water. A stainless-steel ball-shaped tip (6 mm diameter) was placed on the central to the restoration's occlusal surface, applied parallel to the long axis of the teeth. Load was applied with a crosshead of 1 mm/min, and the maximum load was recorded in Newton until failure occurred.

FAILURE MODE

All specimens were evaluated to determine failure mode, and this failure was classified as mode I (fracture in restorative material), mode II (fracture in tooth and restoration), mode III (fracture of one cusp, intact restoration), and mode IV (longitudinal fracture, unrestorable), (Figure 2).

Table 1 . Restorative materials used in the study.

| Material | Type | Composition/ resin matrix | Filler | Manufacturer instructions | Filler load Wt% | Manufacturers |
|---------------------------------|-----------------------------------------------|----------------------------------------------------------------------------------------|---------------------------------------------------------------------------------------------------------------------------|--------------------------------------------------------------------|----------------------------------------------------------|------------------------------------------------|
| Total etch | Etching system | %37 Phosphoric acid gel | - | Application 10-15s Wash 5s Dry 5s | - | Ivoclar, Vivadent AG, Schaan, Liechtenstein |
| G-Premio Bond | Adhesive system | 4-MET, 10-MDP, MDTP, phosphoric acid ester monomer, | - | Application 10s Dry 5 s light cured 10s | - | GC, Tokyo, Japan |
| Filtek Ultimate (F) | Nanofill composite | Bis-GMA, UDMA, TEGDMA, bis-EMA, PEGDMA, | silica/zirconia cluster filler, (0.6-10 µm), zirconia particles (4-11 nm) | 2mm layers, light cured 20s | %78.5 | 3M Oral Care, St Paul, MN, USA |
| EverX Posterior (EX) | Short Fiber-reinforced bulk-fill composite | BisGMA, PMMA, TEGDMA, Short E-glass fiber filler, barium glass | Silicon dioxide (max. 5 wt%), Barium glass (max. 70 wt%) E-glass fiber (max. 15 wt%) | 4mm layers, light cured 10s | Average filler load 67.7 Average glass fiber load 8.6 | GC, Tokyo, Japan |
| Filtek Bulk Fill Posterior (FB) | Nanofill bulk-fill composite | UDMA, BisGMA, EBPADMA, DDDMA procrilate resin, : Silane-treated ceramic and YbF filler | Zirconia/silica: 0.01-3.5 µm Ytterbium trifluoride: 0.1-5.0 µm | 4mm layers, light cured 30 s (whole time divide by three faces) | 64.5 | 3M Oral Care, St Paul, MN, USA |
| Admira Xtra Fusion (AB) | Nano-hybrid ormocer based bulk-fill composite | Ormocer resin | Fillers and resin matrix based purely on silicon oxide, (no content of classic monomers) | 4mm layers, light cured 20 s | %84 | VOCO, Cuxhaven, Germany |
| Tetric EvoCeram® Bulk Fill (TB) | Nano-hybrid bulk-fill composite | BisGMA, UDMA | Barium-alumino-silica, spherical mixed oxide, prepolymer filler (ytterbium trifluoride, glass filler, and monomer 17 wt%) | 4mm layers, light cured 10 s | %80 (with 17% prepolymers) | Ivoclar, Vivadent AG, Schaan, Liechtenstein |

4-MET: 4-[2-(methacryloyloxy)ethoxycarbonyl] phthalic acid, MDTP: 1-methyl-4-phenyl-1,2,3,6-tetrahydropyridine, 10-MDP: 10-methacryloyloxydecyl dihydrogen phosphate, Bis-GMA: bisphenol A glycol dimethacrylate, UDMA: urethane dimethacrylate, TEGDMA: triethyleneglycol dimethacrylate, bis-EMA: bisphenol A ethoxylate dimethacrylate, PEGDMA: polyethylene glycol dimethacrylate, PMMA: Polymethyl methacrylate, EBPADMA: ethoxylate bisphenol A dimethacrylate, DDDMA: 1,12-dodecane dimethacrylate.

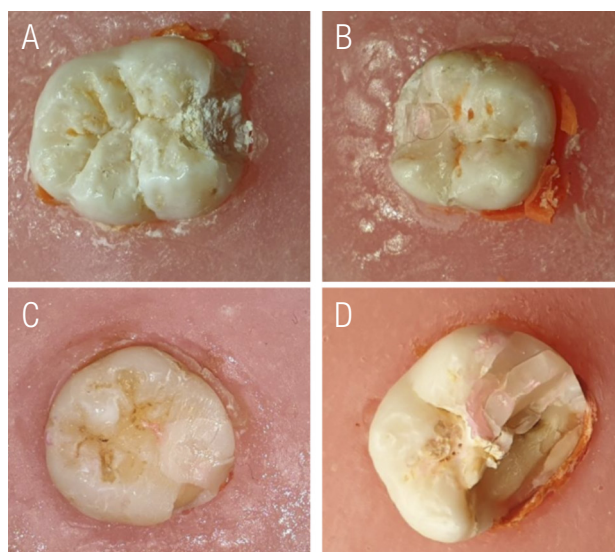


Figure 2. Failure mode classification with representative images. (A) mode I, (B) mode II, (C) mode III, and (D) mode IV.

STATISTICAL ANALYSIS

All analyses were performed using a statistical software package (SPSS, version 22.0, SPSS, Inc., Chicago, IL, USA). Data represented normal distribution according to both Kolmogorov-Smirnov and Shapiro-Wilk tests. Also, it was

observed that the variances were homogeneous according to Levene Statistic ($p=0,599$ for based on mean). Therefore, one-way ANOVA and Post Hoc Tukey's tests were used to determine the differences between the groups. Significance was set to <0.05 .

RESULTS

The mean load and standard deviations of the specimens were presented in Table 2. According to the results, the fracture resistance of the FI group was significantly lower compared to the other groups ($p<0.05$), and the EX group showed the highest fracture resistance; however, there were no statistically significant differences between control, EX, FB, and TB groups ($p>0.05$). Furthermore, FB, AB, and TB groups were statistically similar ($p>0.05$).

The percentage of failure modes were presented in Figure 3. Mode I and mode II failure types were predominant in all groups. Additionally, mode IV failure had never seen in the EX group.

Table 2. Fracture resistance of experimental groups.

| Group | N | Mean (std) (N) | Min/ Max(N) | Confidence interval (%95) | |
|---------|----|---------------------------------|-----------------|---------------------------|-------------|
| | | | | Lower bound | Upper bound |
| Control | 10 | 2124.90 (248.69) ^{ab} | 1838.00/2650.00 | 1946.99 | 2302.80 |
| FI | 10 | 1117.20 (360.03) ^d | 711.00/1901.00 | 859.64 | 1374.75 |
| EX | 10 | 2223.40 (451.88) ^{ab} | 1477.00/3104.00 | 1900.13 | 2546.66 |
| FB | 10 | 2024.70 (285.01) ^{abc} | 1664.00/2426.00 | 1820.81 | 2228.58 |
| AB | 10 | 1621.90 (244.82) ^c | 1257.00/1996.00 | 1446.76 | 1797.03 |
| TB | 10 | 1764.50 (277.79) ^{bc} | 1443.00/2183.00 | 1565.77 | 1963.22 |

Different letters mean a statistically significant difference ($p<0.05$).

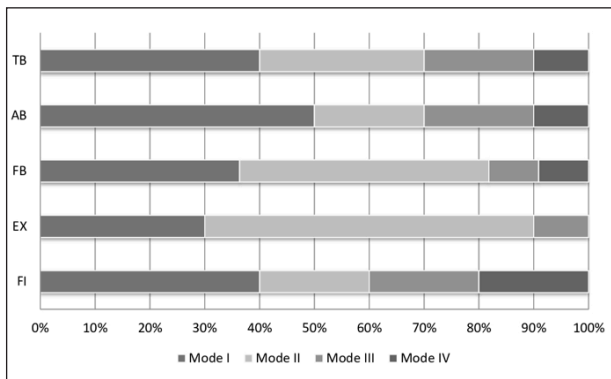


Figure 3. Percentage of failure mode according to the groups.

DISCUSSION

The posterior teeth are the most affected by the occlusal loads. Restorative procedures cause deterioration of enamel continuity and decrease the resistance of teeth to fracture. In particular, restorations involving more than one-third of the intercuspal distance are even more susceptible to cusp fracture (19). Therefore, the fracture resistance of restorative materials is clinically very important. Composite resins which are routinely used for tooth restoration have the disadvantages of polymerization shrinkage (20). Shrinkage stress' development depends on the stiffness of the composite at the time of shrinkage and the volumetric shrinkage strain. To reduce the net effect of polymerization shrinkage and to ensure a full depth of cure, it is usually recommended to apply the composite in 2mm increments and polymerize each increment independently (21). However, our results revealed that despite the use of incremental technique, the lowest failure load was obtained from the teeth restored with conventional Bis-GMA resins. Thus, it can be assumed that using advanced materials seems to have priority rather than placement technique. Therefore, composites having novel photoinitiators, different matrix formulations, and filler contents have been introduced to improve physical properties (22). Several materials have been manufactured for this purpose. One of these materials is fiber-reinforced composites, consisting

of short glass fibers (1-2mm) and barium glass filler (23). Previous studies revealed that these materials show higher compressive strength (24), flexural strength, flexural modulus (24,25), fracture resistance (26), lower polymerization shrinkage (27), and microleakage (28) compared to other resin materials. In the present study, teeth restored with fiber-reinforced composite showed the similar fracture resistance to the level of intact teeth. This indicates the modulus of elasticity homogeneity between restorative material and tooth. Because modulus of elasticity is responsible for how a material would manage the internal tensions produced by forces received externally. It has been reported that direct composite restoration applications, especially in large cavities, showed high fracture resistance but caused non-reparable fractures in teeth (29). This phenomenon occurs mainly because of the remaining tissue in large cavities, which may be mostly enamel. Although the enamel is more resistant than most resin composites, it is more brittle than dentin and resin composites because of its higher elasticity modulus. A recent study, using the EverX posterior to the restoration of molars, regardless of whether they were endodontically treated or not, showed improving fracture resistance and fracture manner (30). These results can be attributed to the physical properties of fiber-reinforced resins mentioned above. This was also verified by the study of Garoushi *et al.* (31), who stated that glass fibers might increase the material's hardness and its resistance to flexural forces, which enables the material to be used in high-pressure posterior areas and large cavities. Vallittu *et al.* (32) reported that fiber-reinforced composites avoid propagation of cracks, which subsequently lead to fractures. According to our results, placing fiber-reinforced composites as a bulk under composite restoration seems more advantageous than bulk-fill composites. We assume that short glass fibers dispersed in EverX posterior provided more resistance than increased filler content of bulk-fill ones.

Bulk-fill composites have been produced to facilitate application and shorten the application time due to not requiring incremental placement. These monoblock resins were classified as a single layer (full body) and two layers (base) (33). So-called two layers (base) are the ones constructed by resin materials covering fiber-reinforced composites, which corresponds to our EX group, which was discussed in the previous section. FB, TB, and AB groups are full-body bulk-fill composites with high ratio inorganic filler leading to increased viscosity (34). Clinical and laboratory studies report that bulk-fill resin composites can be applied successfully in large restorations (2,35-38). In the present study, all of the bulk-fill composites improved the failure load of teeth compared to conventional Bis-GMA based one, presumably resulting from their increased filler volume content and reduced polymerization shrinkage (39).

Differences in the type of resin composite and matrix resin, molecular mobility, size of filler particles, and surface treatment of fillers may affect the mechanical properties of the material (26). It has been advocated that Ormocer-matrix (AB in the present study) may exhibit lower polymerization shrinkage, wear, and monomer leakage due to larger monomer molecules (40). Although AB and TB groups have high filler loading materials used in this present study, fracture resistance values of the groups are relatively lower than the other bulk-fill resin composites. The use of pre-polymerized filler particles, such as in the TB group, has been reported previously to result in lower mechanical properties (41). Besides, Shimokawa *et al.* (42), Tetric EvoCeram, and AdmiraFusion Xtra (TB and AB groups of the present study) showed more wear compared to Filtek Bulk Fill Posterior (FB in the present study). Although the present study does not evaluate the wear resistance of the tested materials, improvements in the physical properties of materials include a decrease in wear resistance and polymerization

shrinkage and an increase in strength. In other words, one of the physical behaviors can be considered as an indicator for others. Although FB seems to be more disadvantageous in terms of filler volume content than AB and TB groups, it shows similar fracture resistance to the EX group in the present study. It may be explained by; contains zirconium (43), to the dispersion of load stress because of the interaction between the resin matrix and fillers through silane coupling or presence of 1,12-dodecane dimethacrylate (DDMA) which increases molecular mobility, and by this way provides a fast cure, flexibility and improved surface characteristics to the polymer matrix (44).

According to the present study results, the failure load of teeth restored with fiber-reinforced and bulk-fill composites was higher than the restored with conventional one. Thus, the null hypothesis was rejected. Previous studies discuss the importance of simulated periodontal ligament to more closely simulate clinical conditions and establish the absorption of masticatory forces by periodontal ligaments and alveolar bone *in vitro* (7, 45). Moreover, in our knowledge, this is the first study comparing different restorative materials with the periodontal simulation method.

CONCLUSION

Within the limitations of the present study, the failure load of teeth restored with fiber-reinforced and bulk-fill composites were higher than the restored with conventional one. Therefore, the use of bulk-fill composites may be recommended for the restoration of class II cavities of posterior teeth. However, there is a need for extensive clinical studies evaluating different parameters.

CONFLICT OF INTEREST

The authors declare no conflict of interest.

REFERENCES

1. Akbarian G., Ameri H., Chasteen J.E., Ghavamnasiri M. Fracture Resistance of Premolar Teeth Restored with Silorane-Based or Dimethacrylate-Based Composite Resins. *J Esthet Restor Dent.* 2014; 26 (3): 200-7.
2. van Dijken J.W., Pallesen U. Posterior bulk-filled resin composite restorations: A 5-year randomized controlled clinical study. *J Dent.* 2016; 51: 29-35.
3. Han S.H., Sadr A., Tagami J., Park S.H. Internal adaptation of resin composites at two configurations: Influence of polymerization shrinkage and stress. *Dent Mater.* 2016; 32 (9): 1085-94.
4. Singhal S., Gurtu A., Singhal A., Bansal R., Mohan S. Effect of Different Composite Restorations on the Cuspal Deflection of Premolars Restored with Different Insertion Techniques- An In vitro Study. *J Clin Diagn Res.* 2017; 11 (8): ZC67-ZC70.
5. Oliveira L.R.S., Braga S.S.L., Bicalho A.A., Ribeiro M.T.H., Price R.B., Soares C.J. Molar cusp deformation evaluated by micro-CT and enamel crack formation to compare incremental and bulk-filling techniques. *J Dent.* 2018; 74: 71-78.
6. Hegde V., Sali A.V. Fracture resistance of posterior teeth restored with high-viscosity bulk-fill resin composites in comparison to the incremental placement technique. *J Conserv Dent.* 2017; 20 (5): 360-364.
7. Rosa de Lacerda L., Bossardi M., Silveira Mitterhofer W.J., Galbiatti de Carvalho F., Carlo H.L., Piva E., Münchow E.A. New generation bulk-fill resin composites: Effects on mechanical strength and fracture reliability. *J Mech Behav Biomed Mater.* 2019; 96: 214-218.
8. Soares C.J., Faria-E-Silva A.L., Rodrigues M.P., Vilela A.B.F., Pfeifer C.S., Tantbirojn D., Versluis A. Polymerization shrinkage stress of composite resins and resin cements - What do we need to know? *Braz Oral Res.* 2017; 31 (suppl 1): e62.
9. Taubock T.T., Jager F., Attin T. Polymerization shrinkage and shrinkage force kinetics of high- and low-viscosity dimethacrylate- and ormocer-based bulk-fill resin composites. *Odontology.* 2019; 107 (1): 103-10.
10. Rosatto C.M., Bicalho A.A., Verissimo C., Bragança G.F., Rodrigues M.P. Tantbirojn D., Versluis A., Soares C.J. Mechanical properties, shrinkage stress, cuspal strain and fracture resistance of molars restored with bulk-fill composites and incremental filling technique. *J Dent.* 2015; 43 (12): 1519-28.
11. Algamaiah H., Danso R., Banas J., Armstrong S.R., Whang K., Rawls H.R., Teixeira E.C. The Effect of Aging Methods on the Fracture Toughness and Physical Stability of an Oxirane/Acrylate, Ormocer, and Bis-Gma-Based Resin Composites. *Clin Oral Investig.* 2020; 24 (1): 369-375.
12. Soares L.M., Razaghy M., Magne P. Optimization of large MOD restorations: Composite resin inlays vs. short fiber-reinforced direct restorations. *Dent Mater.* 2018; 34 (4): 587-597.
13. Atalay C., Yazici A.R., Horuztepe A., Nagas E., Ertan A., Ozgunaltay G. Fracture Resistance of Endodontically Treated Teeth Restored With Bulk Fill, Bulk Fill Flowable, Fiber-reinforced, and Conventional Resin Composite. *Oper Dent.* 2016; 41 (5): E131-E140.
14. E I-Damanhoury H., Platt J. Polymerization shrinkage stress kinetics and related properties of bulk-fill resin composites. *Operative dentistry.* 2014; 39 (4): 374-82.
15. Marovic D., Taubock T.T., Attin T, Panduric V., Tarle Z. Monomer conversion and shrinkage force kinetics of low-viscosity bulk-fill resin composites. *Acta odontologica Scandinavica.* 2015; 73 (6): 474-80.
16. Taubock T.T., Tarle Z., Marovic D., Attin T. Pre-heating of high-viscosity bulk-fill resin

- composites: effects on shrinkage force and monomer conversion. *Journal of dentistry*. 2015; 43 (11): 1358-64.
17. Benetti A.R., Havndrup-Pedersen C., Honore D., Pedersen M.K., Pallesen U. Bulk-fill resin composites: polymerization contraction, depth of cure, and gap formation. *Operative dentistry*. 2015; 40 (2): 190-200.
 18. Sedrez-Porto J.A., Munchow E.A., Valente L.L., Cenci M.S., Pereira-Cenci T. New material perspective for endocrown restorations: effects on mechanical performance and fracture behavior. *Brazilian oral research*. 2019; 33: e012.
 19. Wafaie R.A., Ibrahim Ali A., Mahmoud S.H. Fracture resistance of prepared premolars restored with bonded new lab composite and all-ceramic inlay/onlay restorations: Laboratory study. *J Esthet Restor Dent*. 2018; 30 (3): 229-239.
 20. Gallo M., Abouelleil H., Chenal J.M., Adrien J., Lachambre J., Colon P., Maire E. Polymerization shrinkage of resin-based composites for dental restorations: A digital volume correlation study. *Dent Mater*. 2019; 35 (11): 1654-1664.
 21. Kaisarly D., Gezawi M.E. Polymerization shrinkage assessment of dental resin composites: a literature review. *Odontology*. 2016; 104 (3): 257-70.
 22. Gan J.K., Yap A.U., Cheong J.W., Arista N., Tan C. Bulk-Fill Composites: Effectiveness of Cure With Poly- and Monowave Curing Lights and Modes. *Oper Dent*. 2018; 43 (2): 136-143.
 23. Hada Y.S., Panwar S. Comparison of the fracture resistance of three different recent composite systems in large Class II mesio-occlusal distal cavities: An in vitro study. *J Conserv Dent*. 2019; 22 (3): 287-291.
 24. Meenakumari C., Bhat K.M., Bansal R., Singh N. Evaluation of Mechanical Properties of Newer Nanoposterior Restorative Resin Composites: An In vitro Study. *Contemp Clin Dent*. 2018; 9 (Suppl 1): S142-S146.
 25. Abouelleil H., Pradelle N., Villat C., Attik N., Colon P., Grosgeat B. Comparison of Mechanical Properties of a New Fiber Reinforced Composite and Bulk Filling Composites. *Restor Dent Endod*. 2015; 40 (4): 262-70.
 26. Bijelic-Donova J., Uctasli S., Vallittu P.K., Lassila L. Original and Repair Bulk Fracture Resistance of Particle Filler and Short Fiber-Reinforced Composites. *Oper Dent*. 2018; 43 (5): E232-E242.
 27. Garoushi S., Säilynoja E., Vallittu P.K., Lassila L. Physical properties and depth of cure of a new short fiber reinforced composite. *Dent Mater*. 2013; 29 (8): 835-41.
 28. Garoushi S.K., Hatem M., Lassila L.V.J., Vallittu P.K. The effect of short fiber composite base on microleakage and load-bearing capacity of posterior restorations. *Acta Biomater Odontol Scand*. 2015; 1 (1): 6-12.
 29. Rocca G.T., Saratti C.M., Cattani-Lorente M., Feilzer A.J., Scherrer S., Krejci I. The effect of a fiber reinforced cavity configuration on load bearing capacity and failure mode of endodontically treated molars restored with CAD/CAM resin composite overlay restorations. *J Dent*. 2015; 43 (9): 1106-1115.
 30. Bijelic-Donova J., Keulemans F., Vallittu P.K., Lassila L.V.J. Direct bilayered biomimetic composite restoration: The effect of a cusp-supporting short fiber-reinforced base design on the chewing fracture resistance and failure mode of molars with or without endodontic treatment. *J Mech Behav Biomed Mater*. 2020; 103:103554.
 31. Garoushi S., Gargoum A., Vallittu P.K., Lassila L. Short fiber-reinforced composite restorations: A review of the current literature. *J Investig Clin Dent*. 2018; 9 (3): e12330.

32. Vallittu P.K. High-aspect ratio fillers: fiber-reinforced composites and their anisotropic properties. *Dent Mater.* 2015; 31 (1): 1-7.
33. García Mari L., Climent Gil A., LLena Puy C. In vitro evaluation of microleakage in Class II composite restorations: High-viscosity bulk-fill vs conventional composites. *Dent Mater J.* 2019; 38 (5): 721-727.
34. Lins R, Vinagre A, Alberto N, Domingues MF, Messias A, Martins LR, Nogueira R, Ramos JC. Polymerization Shrinkage Evaluation of Restorative Resin-Based Composites Using Fiber Bragg Grating Sensors. *Polymers (Basel).* 2019; 11 (5).
35. Loguercio A.D., Rezende M., Gutierrez M.F., Costa T.F., Armas-Vega A., Reis A. Randomized 36-month follow-up of posterior bulk-filled resin composite restorations. *J Dent.* 2019; 85: 93-102.
36. Heck K., Manhart J., Hickel R., Diegritz C. Clinical evaluation of the bulk fill composite QuiXfil in molar class I and II cavities: 10-year results of a RCT. *Dent Mater.* 2018; 34 (6): e138-e147.
37. Mergulhão V.A., de Mendonça L.S., de Albuquerque M.S., Braz R. Fracture Resistance of Endodontically Treated Maxillary Premolars Restored With Different Methods. *Oper Dent.* 2019; 44 (1): E1-E11.
38. Lins R.B.E., Aristilde S., Osório J.H., Cordeiro C.M.B., Yanikian C.R.F., Bicalho A.A., Stape T.H.S., Soares C.J., Martins L.R.M. Biomechanical behaviour of bulk-fill resin composites in class II restorations. *J Mech Behav Biomed Mater.* 2019; 98: 255-261.
39. Van Ende A., De Munck J., Lise D.P., Van Meerbeek B. Bulk-Fill Composites: A Review of the Current Literature. *J Adhes Dent.* 2017; 19 (2): 95-109.
40. Monsarrat P., Garnier S., Vergnes J.N., Nasr K., Grosgeat B., Joniot S. Survival of directly placed ormocer-based restorative materials: A systematic review and meta-analysis of clinical trials. *Dent Mater.* 2017; 33 (5): e212-e220.
41. Beun S., Glorieux T., Devaux J., Vreven J., Leloup G. Characterization of nanofilled compared to universal and microfilled composites. *Dent Mater.* 2007; 23 (1): 51-9.
42. Shimokawa C., Giannini M., André C.B., Sahadi B.O., Faraoni J.J., Palma-Dibb R.G., Soares C.J., Price R.B. In Vitro Evaluation of Surface Properties and Wear Resistance of Conventional and Bulk-fill Resin-based Composites After Brushing With a Dentifrice. *Oper Dent.* 2019; 44 (6): 637-647.
43. Fronza B.M., Ayres A., Pacheco R.R., Rueggeberg F.A., Dias C., Giannini M. Characterization of Inorganic Filler Content, Mechanical Properties, and Light Transmission of Bulk-fill Resin Composites. *Oper Dent.* 2017; 42 (4): 445-455.
44. Shibasaki S., Takamizawa T., Nojiri K., Imai A., Tsujimoto A., Endo H., Suzuki S., Suda S., Barkmeier W.W., Latta M.A., Miyazaki M. Polymerization Behavior and Mechanical Properties of High-Viscosity Bulk Fill and Low Shrinkage Resin Composites. *Oper Dent.* 2017; 42 (6): E177-E187.
45. Göktürk H., Karaarslan E.Ş., Tekin E., Hologlu B., Sarikaya I. The effect of the different restorations on fracture resistance of root-filled premolars. *BMC Oral Health.* 2018; 18 (1): 196.



Attribution (BY-NC) - (BY) You must give appropriate credit, provide a link to the license, and indicate if changes were made. You may do so in any reasonable manner, but not in any way that suggest the licensor endorses you or your use. (NC) You may not use the material for commercial purposes.