

BASIC RESEARCH

DOI: 10.15517/IJDS.2021.47842

Received:
17-V-2021

Influence of Etching Mode and Composite Type on Bond Strength to Biodentine Using a “No-Wait” Universal Adhesive

Accepted:
16-VI-2021

Published Online:
22-VII-2021

Influencia del modo de grabado y del tipo de resina en la resistencia adhesiva al Biodentine utilizando un adhesivo universal tipo "no-wait"

Ayça Sarialioğlu Güngör¹; Betül Aycan Uysal²

1. Assistant Professor, Department of Endodontics, Faculty of Dentistry, Bezmialem Vakif University, Istanbul, Turkey. <https://orcid.org/0000-0002-8779-2949>

2. Assistant Professor, Department of Restorative Dentistry, Faculty of Dentistry, Bezmialem Vakif University, Istanbul, Turkey. <https://orcid.org/0000-0002-6113-6927>

Correspondence to: Dr. Ayça Sarialioğlu Güngör - asarialioglugungor@bezmialem.edu.tr

ABSTRACT: The purpose of this study was to compare the shear bond strength (SBS) of four resin-based composite materials to a silicate-based cement using a “no-wait” universal bond with self-etch (SE) and etch-and-rinse (ER) modes. Acrylic blocks (n=80, 2mm depth, 5mm diameter central hole) were prepared. The holes were filled with Biodentine™ (BD) and divided into 4 main groups (n=20) according to the composite resin type used: Group FZ250: Filtek™ Z250 Universal Restorative (microhybrid), Group SDR: SDR Plus U Bulk Fill Flowable (low-viscosity bulk-fill), Group FBP: Filtek™ Bulk Fill Posterior (high-viscosity bulk-fill), Group EF: EsFlow™ Universal Flowable Composite (nanohybrid). A ‘no-wait’ universal bond (Clearfil Universal Bond Quick) was used for bonding application. Then each group was divided into 2 subgroups according to the etching mode applied (ER and SE). SBSs were measured and stereomicroscope was used to identify the failure modes. Selected samples of fracture surfaces were imaged by SEM. Tukey’s post-hoc and One-way ANOVA tests were used to analyze data. There were statistically significant differences among the composite groups ($p < 0.05$). When SDR showed the highest bond strength values in SE (17.13 ± 2.98 MPa) mode, FBP showed the lowest bond strength values in ER (8.89 ± 2.46 MPa) mode. The mean SBS was not different between the SE and ER modes ($p > 0.05$). The SBS of BD to the resin composites depends on the composite type but application of the ‘no-wait’ universal bond in different etching modes is regardless of the SBS of BD to resin composites.

KEYWORDS: Biodentine; Self-etch adhesive; Shear bond strength.

RESUMEN: El objetivo de este estudio fue comparar la resistencia de adhesión al cizallamiento (SBS) de cuatro resinas con un cemento a base de silicato utilizando un adhesivo universal "no-wait" de autograbado (SE) y grabado y lavado (ER). Se prepararon bloques acrílicos (n=80, de 2mm de profundidad y un agujero central de 5mm de diámetro). Los agujeros se rellenaron con Biodentine™ (BD) y se dividieron en 4 grupos principales (n=20) según el tipo de resina compuesta utilizada: Grupo FZ250: Filtek™ Z250 Universal Restorative (microhíbrido), Grupo SDR: SDR Plus U Bulk Fill Flowable (bulk-fill de baja viscosidad), Grupo FBP: Filtek™ Bulk Fill Posterior (bulk-fill de alta viscosidad), Grupo EF: EsFlow™ Universal Flowable Composite (nanohíbrido). Para la aplicación de la adhesión se utilizó un adhesivo universal "no-wait" (Clearfil Universal Bond Quick). A continuación, cada grupo se dividió en 2 subgrupos según el modo de grabado aplicado (ER y SE). Se midieron los SBS y se utilizó el estereomicroscopio para identificar los modos de fallo. Las muestras seleccionadas de las superficies de fractura se analizaron mediante SEM. Se utilizaron las pruebas post-hoc de Tukey y ANOVA de una vía para analizar los datos. Hubo diferencias estadísticamente significativas entre los grupos de composites ($p < 0,05$). Cuando la SDR mostró los valores más altos de resistencia a la adhesión en el modo SE ($17,13 \pm 2,98$ MPa), la FBP mostró los valores más bajos de resistencia a la adhesión en el modo ER ($8,89 \pm 2,46$ MPa). La SBS media no fue diferente entre los modos SE y ER ($p > 0,05$). La SBS de la BD a los composites de resina depende del tipo de composite, pero la aplicación de la unión universal "no-wait" en los diferentes modos de grabado es independiente de la SBS de la BD a los composites de resina.

PALABRAS CLAVE: Biodentine; Adhesivo autocurado; Resistencia adhesiva a la cizalla.

INTRODUCTION

Vital pulp therapy (VPT) is a dental procedure to preserve pulp vitality and consists of using a biocompatible material on the exposed pulp of the teeth (1). Several materials with a good sealing ability are used for pulp capping such as calcium hydroxide, mineral trioxide aggregate (MTA) and silicate-based cements (BioAggregate®, EndoSequence®, Biodentine™ (BD), etc.) (2).

BD (Septodont, Saint Maur des Fosses, France) is a unique calcium silicate-based cement, which has been used as a dentin replacement material under composite restorations, direct pulp capping and

endodontic treatment (3). BD consists of dicalcium/ tricalcium silicate, calcium carbonate (as a filler) (4), zirconium oxide (as an opacifier) (5), and calcium chloride containing liquid. Calcium chloride is a water-reducing agent that accelerates the setting time of BD. The incorporation of calcium chloride into the liquid improves the mechanical properties of the cement as well (6). Compared to MTA, BD has exhibited better sealing ability, biocompatibility and bioactivity, higher mechanical properties, shorter setting time and lower microleakage (7).

The capability to seal the pulp-capping materials is one of the most important issues

in VPT. Keeping the cements intact affects the prognosis of the treatment procedure. Because of the fragility and unsatisfactory esthetics of BD, it is better to make the final filling with different restorative material, usually a composite one. Resin-based composites are common restorative materials, used both in anterior and posterior regions. The bond strength between BD and the composite resin has an important role in achieving the final restoration, which depends on the procedures associated with the application of the adhesive system. A sufficient bond between the restorative material and the pulp-capping material can distribute stresses beyond the bonded surface, reduce microleakage and increase the strength of the remaining tooth structure (8). Hence, the bond strength of any restorative material to pulp capping agents has been an issue of concern; consequently, the adhesive strategy used for the final restoration on calcium-silicate cement is of clinical interest.

Several studies investigated the bond strength of BD using various types of bonding systems. Some authors suggest the superiority of the self-etch (SE) systems over the etch-and-rinse (ER) mode (9,10), while other literatures report that the ER mode provides higher bond strength of the tested materials (11,12). The aim of this in vitro study was to evaluate the SBS of a “no-wait” universal adhesive (UA) applied to BD in different etching modes, followed by the placement of different composite resin types. The null hypotheses were: (1) the etching mode will have no effect on

the SBS and there will be no significant difference between the ER and SE mode; (2) the composite resin type will have no effect on the SBS and there will be no significant difference between the tested composite resins.

MATERIALS AND METHODS

SAMPLE SIZE CALCULATION

The sample size was determined according to the previous studies (13,14). To achieve a medium effect size ($d=0.50$), with 95% power and a 5% type 1 error rate, ten samples were needed for each group.

SPECIMEN PREPARATION

Eighty specimens of BD were fabricated using cylindrical acrylic blocks (Paladur, Heraeus Kulzer, Hanau, Germany) with a 5mm central hole in diameter and 2mm in depth. BD was mixed according to the manufacturer's instructions and placed in each acrylic block. To ensure standardization of the sample surfaces, a glass slab was placed on top of the blocks so that BD set against a smooth surface. After initial setting time of 12min, all specimens were covered with wet gauze and stored at 37°C with 100% humidity in an incubator to encourage setting time.

The materials used in this study, their compositions and batch numbers are shown in Table 1.

Table 1. Adopted materials and their compositions, batch numbers, and application procedures.

Material (Batch)	Composition	Application procedures
Biodentine Septodont, Saint-Maur-des-Fosses Cedex, France (B24436)	Powder: tricalcium silicate, dicalcium silicate, calcium carbonate and oxide, iron oxide, and zirconium oxide Liquid: calcium chloride and hydrosoluble polymer.	Five doses of liquid and powder supplied for 30 s with a mixed amalgamator
Filtek Z250 (A3 Shade) 3M ESPE, St Paul MN, USA (N970669)	Organic Matrix Composition: BIS-GMA, UDMA and BIS-EMA. Inorganic Filler Particulate: (82 wt%/60 vol%) 0.01-3.5 mm zirconia/silica filler.	Light polymerization for 20s.
SDR Plus U Bulk Fill Flowable (A2 Shade) Dentsply Sirona, York, USA (12293)	Organic Matrix Composition: modified urethane dimetacrylate resin, TEGDMA; dimethacrylate resin; trimethacrylate resin; camphor- quinone; ethyl-4 (dimethylamino)benzoate photoacce- lerator; butylated hydroxy toluene; fluorescent agent, and UV stabilizer. Inorganic Filler Particulate: (70.5 wt%, 47.4 vol%) barium-alumino-fluoro-borosilicate glass, silanated strontium alumino-fluoro-silicate glass, surface treated fume silicas, ytterbium fluoride, synthetic inorganic iron oxide pigments, and titanium dioxide.	Light polymerization for 20s.
Filtek™ Bulk Fill Posterior (A2 Shade) 3M ESPE, St Paul, MN, USA (N981826)	Organic Matrix Composition: BIS-GMA, UDMA, EBPADMA, procrylate resin. Inorganic Filler Particulate: (64 wt%/42.5 vol%) Silane- treated ceramic and YbF.	Light polymerization for 20s.
EsFlow™ Universal Flowable Composite (A2 Shade) Spident Co Ltd, Korea (E1F18003)	Organic Matrix Composition: BIS-GMA, UDMA. Inorganic Filler Particulate: 50–55 vol% Ba glass.	Light polymerization for 20 s.
Clearfil Universal Bond Quick Kuraray Noritake Dental, Tokyo, Japan (000036)	Bis-GMA (10–25%), ethanol (10–25%), HEMA (2.5–10%), 10-MDP, hydrophilic amide monomer, colloidal silica, silane coupling agent, NaF, camphor- quinone, water (pH = 2.3).	SE: apply in rubbing motion; without waiting, mildly air-dry (≥ 5 s) until the adhesive no longer moves and light cure for 10 s ER: etch for 10 s using K-Etchant Syringe (Kuraray Noritake), thoroughly rinse with water (> 10 s), gentle air-dry, and proceed as in the SE case.

The specimens were randomly assigned into four groups (n=20) according to the composite resin type used:

- Group FZ250: Filtek Z250 Universal Restorative (3M ESPE, St Paul, USA)- microhybrid composite resin.
- Group SDR: SDR Plus U Bulk Fill Flowable (Dentsply Sirona, USA)- low-viscosity bulk-fill composite resin.
- Group FBP: Filtek™ Bulk Fill Posterior (3M ESPE, St Paul, USA)- high-viscosity bulk-fill composite resin.
- Group EF: EsFlow™ Universal Flowable Composite (Spident Co Ltd, Korea)- nanohybrid flowable composite resin.

Then, each group was divided into 2 subgroups according to the etching mode (ER and SE) applied (n=10). Clearfil Universal Bond Quick (Kuraray Noritake, Tokyo, Japan) (CUQ) was applied to the specimens in two different etching modes according to the manufacturer's instructions. Resin composites were placed at the center of BD surfaces by using cylindrically shaped plastic tubes with an internal diameter of 2mm and a height of

2mm and polymerized with a light-emitting diode (VALO Cordless; Ultradent, South Jordan, USA) for 20 s. All specimens were stored in distilled water at 37°C for 24h before testing. After the storage period, the plastic tubes were removed carefully from all specimens using a sharp scalpel (Broche Medical, Istanbul, Turkey). Then the specimens were thermocycled for 10,000 cycles at 5°C and 55°C. Following ISO 11405:2015 instructions (15), the dwell time in each bath was set 20 seconds, and the transfer time between the 2 baths was set 10 seconds.

SHEAR BOND STRENGTH (SBS) TEST

A “knife-edge” blade with dimension of 2 mm was used in a universal testing machine (Shimadzu, Model AGS-X 5 kN; Shimadzu Corporation, Kyoto, Japan) to create a vertical loading force with a cross-head speed of 1.0 mm/min until debonding occurred. Schematic design of the study protocol is presented in Figure 1. The SBS was calculated in megapascals (MPa) using the equation $SBS (MPa) = F(\text{Newton}) / (\pi R^2)$, where F was the applied load at failure and R was the radius of the resin composite cylinder.

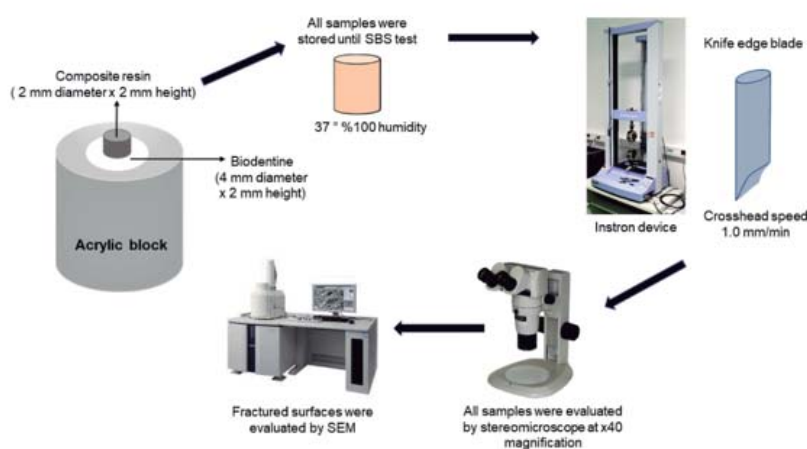


Figure 1. Schematic design of the study protocol.

INTERFACE EXAMINATION

The fractured surfaces were evaluated by a single operator after debonding, using a stereomicroscope (SMZ 1000, Nikon, Japan) at 40x magnification to identify the failure modes into one of the following categories:

- Adhesive failure at the interface between composite resin and BD;
- Cohesive failure within the BD or composite resin;
- Mixed failure composed of adhesive and cohesive failure of the BD or the composite resin.

Representative specimens (n=6) chosen randomly from each group and imaged using a scanning electron microscope (SEM) (Hitachi SU3500, Japan) at magnification of 42x. Prior to SEM observations, the specimens were sputter-coated with gold at 45 mA current for 2 min (Sputter Coater S 150A; Edwards, Crawley, England).

STATISTICAL ANALYSIS

SPSS 24.0 for Windows (SPSS Inc., Chicago, IL, USA) were carried out for data analysis. Shapiro-Wilk test was used to determine the normality. As the data were normally distributed, the data were consequently analysed using parametric tests. Descriptive statistics were used to summarize the study characteristics and SBSs for resin composite materials. Percentages were used to present

the failure modes for different materials. One-way ANOVA test was used to compare the groups. Paired T-test was used within the groups to determine the effect of etching mode on SBSs. Pearson correlation coefficients were calculated to determine the relationships between measurements separately in groups. Statistical significance was determined at a confidence level of 0.05 in all the analyses ($p < 0.05$).

RESULTS

The SBS values of different resin composites to BD by applying a no-wait universal bond in different modes are shown in Figure 2. When taking into account the composite resins, a significant increase in the SBS of SDR was found compared to other composite resin groups ($p < 0.05$). The lowest SBS value was obtained in Group FBP in ER mode (8.89 ± 2.46 Mpa). The highest SBS value was obtained in Group SDR in SE mode (17.13 ± 2.98 Mpa). When taking into account the etching mode, no significant difference was found between the SE and ER etching modes ($p > 0.05$).

Failure types of the experimental groups are summarized in Figure 3. The majority of failures (48%) occurred cohesively within the BD followed by adhesive failures (28 %). Representative SEM and stereomicroscopy images of fractured BD samples exhibiting adhesive, cohesive, and mixed failures are shown in Figure 4.

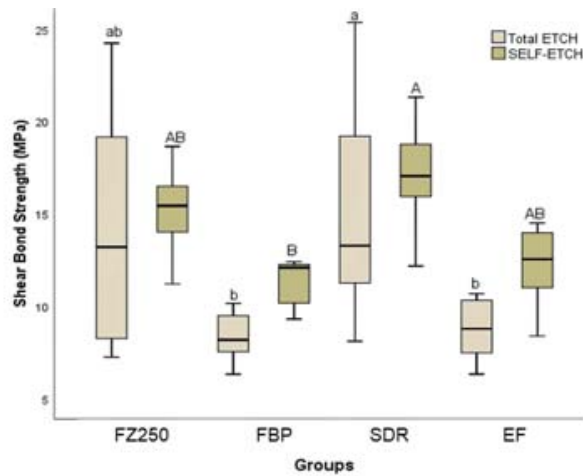


Figure 2. The shear bond strength values (MPa) of each tested groups.

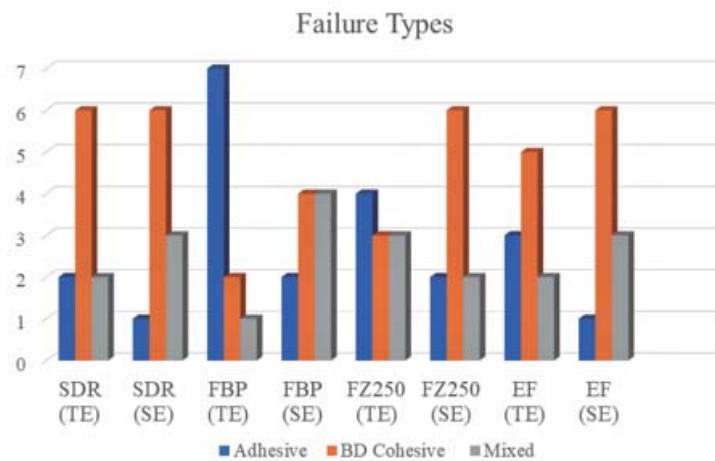


Figure 3. The failure types of tested groups.

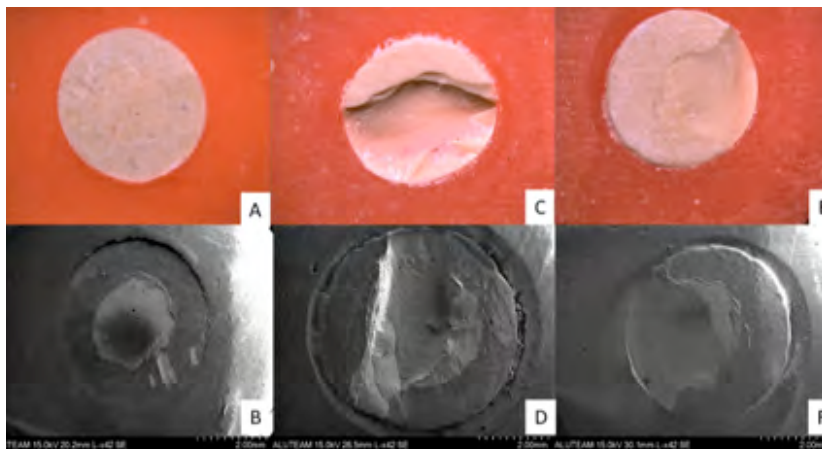


Figure 4. Stereomicroscopic images at x40 magnification and SEM micrographs (x42) of the representative failure types in different experimental groups. (A) Stereomicroscopic image of the adhesive failure. (B) SEM image of the adhesive failure. (C) Stereomicroscopic image of the BD cohesive failure. (D) SEM image of the BD cohesive failure. (E) Stereomicroscopic image of the mixed failure. (F) SEM image of the mixed failure.

DISCUSSION

When performing VPT procedures, after pulp capping material placement, a powerful bonding between the composite restoration and the biomaterial is crucial to a successful treatment (16). A wide range of study protocols with different adhesive systems and composite types do not allow a comparison between studies. Therefore, the design of a restorative protocol is important to maintain success of VPT. Literature remains uncertain concerning which should be the convenient adhesive strategy and restorative material (11,13,16,17).

In recent years, UA have been introduced with a 'quick bonding' concept by some manufacturers. These are recommended to be used in a short time following a 'no-wait' concept: apply and light cure without waiting. According to the manufacturer's instructions, UA can be light cured at the time of application as it no longer interacts with the dental tissue or additional time is required for the solvent to evaporate before light curing (18). One of the revolutionary "no wait" UAs is CUQ, whose manufacturer claims to have recorded a higher SBS to the dentin than other UAs that have been in use for a longer time. They attributed the excellent data obtained when CUQ was applied without waiting for the quick bonding protocol, to its lower HEMA content, higher purity of the functional monomer 10-methacryldecyl dihydrogen phosphate (10-MDP) and the new acrylamide monomer technology, which has been claimed to improve the infiltration properties of the adhesive (19). In our study, we chose to use this adhesive because of its superior properties.

In the literature there are no studies evaluating the SBS of resin composites when bonded to BD using a "no-wait" UA system. Odabaş *et al.* (10) evaluated the SBS of ER and SE adhesive systems to BD and reported that the highest bond strength value was achieved with SE adhesive systems.

The SBSs of three different dentin replacement materials (BD, Theracal LC, and Fuji IX) were reported to be lower when a one-step SE adhesive was used (11). Hashem *et al.* (20) found no statistically significant differences between using a UA in ER or SE modes when BD was used. Etching BD has been suggested to lead destruction of the microstructure and improves the leakage through the biomaterial/composite interface (21). The authors also stated that the chemical composition of BD changed after the application of phosphoric acid, due to the formation of a Ca-phosphate precipitate (22). As mentioned, the application of phosphoric acid on BD showed mechanical and chemical changes on the biomaterial surface (11,20). Essentially, there are few studies evaluating the etching effect on the surface of BD, and no evidence is existing for CUQ. The most common monomer used in adhesive systems is 2-hydroxy-ethyl-methacrylate (HEMA) (23,24). Furthermore, it has been suggested that the functional monomer 10-MDP, present in CUQ, may bind to the calcium in calcium silicate cements, promoting chemical bond in addition to micromechanical attachment (20). The functional monomer can make the adhesion interface more resistant to degradation by forming hydrolytically stable 10-MDP salts, which ionically interact with calcium (25).

In the present study, it was shown that the effect of the etching mode on the SBS of resin composites to BD was not significant ($p>0.05$). The effect of the addition of another material variable is eliminated by the use of the same UA in both SE and ER modes. The similar SBS values between SE and ER etching modes may be due to the porous structure of the BD surface which may have eliminated the effect of the differences between etching modes. Besides, the acidity from the etching modes may have been buffered by the alkalinity of the BD, reducing its effect as well. In a study investigating the effect of etching on BD compared with GIC and RMGIC, structural and chemical changes were found in the etched

compared to non-etched BD (21). Other researchers reported that the placement of composite resin over BD using SE adhesive system resulted in better SBS (10). Conversely, the SBS of BD specimens was lower when SE adhesive was used, which debonded during thermocycling in accordance to a previous study (7). A low pH can interfere with the setting reaction, affect adhesion, or increase the solubility of calcium silicate-based materials (26-30). The development of hydroxyapatite crystals and thus a hybrid layer at the calcium silicate-based materials and dentin interface are likely to be limited in an acidic environment (27). The differences in results may be due to the differences in research methodology such as thermal cycling and different brands of adhesive systems used.

The highest SBS was observed in the Group SDR in SE mode. This may be due not only to the monomer chemistry of SDR bulk-fill flowable composite, but also to its surface energy and wettability characteristics which are better than those of the other composites used (31). Van Ende *et al.* (32) stated that bulk-fill flowable composites showed better internal adaption than methacrylate-based flowable composites with increased wettability in cavities with high C-factor. Adaptation of the composite resin is associated with higher surface energy and the high surface energy enhances the SBS. Likewise, Moorthy *et al.* (33) reported that bulk-fill composites have better cavity adaptation than methacrylate-based composites.

Therefore, the first null hypothesis that the composite resin type did not have significant effect on the SBS was rejected but the second null hypothesis that different etching mode did not affect SBS was accepted.

The bond strengths presented in this study were low when compared with the SBS of CUQ to dentin, which was reported by Saito *et al.* (34)

to be as high as 34.5 MPa. This may lead to the belief that the bond between the tricalcium-based cement and the overlying composite restoration may be less important than the bond between the final restorative material and the surrounding dentin/enamel surfaces.

The overall distribution of the failure location was largely cohesive within the BD; this could be an indicative of durable interaction because the material itself collapsed prior to adhesion between the BD and the composite resin. The dominant cohesive mode of failure in BD specimens may reflect a low cohesive strength of the material itself (20). Furthermore, no specimens presented cohesive fractures within the composite resin, likewise Palma *et al.*'s (35) and Odabas *et al.*'s (10) results. It has been suggested that bonding is acceptable when the fractures are cohesive within the biomaterial, contrary to the occurrence of adhesive fractures (36). A cohesive failure within the pulp capping material represents the strength of the biomaterial itself and does not necessarily reflect the interfacial bond strength of composite/biomaterial (20).

Our results showed a larger variability in the TE samples when compared with the SE. Although the initial setting time of BD is known as 12 min, it takes up to 2 wk to achieve complete maturation of BD and reach its maximum physico-mechanical properties (37). The early application of acid with low pH may have caused a non-uniform stress distribution that concentrated in the material substrate of some specimens and caused premature failure of the interface itself (38). No statistically significant difference was found between the SBS values of TE and SE modes, however the results of TE specimens were found to be lower than those of SE samples. Clinically, this finding should be viewed with caution, as it influences the decision in which mode to apply the UA to the overlying resin composite restoration, as the

cured shrinkage of the resin composite can stress the weak BD in this early sensitive setting phase, leading to premature failure.

Based on the results of this study, future studies should look into the SBS of BD leaving to set for a longer time period before the application of the resin composite materials.

CONCLUSION

Within the limitations of the present in vitro study, our findings suggest that SDR has shown superior SBS results when compared with all tested resin composites, which present a suitable alternative for performing restorative procedure immediately after BD placement. Besides, applying a “no-wait” universal adhesive on BD in SE or ER mode did not change the SBS of the tested resin composites.

CONFLICTS OF INTEREST

The authors declare no conflict of interest.

ACKNOWLEDGEMENTS

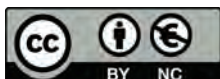
The authors would like to thank Editage (www.editage.com) for English language editing.

REFERENCES

1. Kodonas K., Fardi A., Gogos C., Economides N. Scientometric analysis of vital pulp therapy studies. *Int Endod J.* 2020.
2. Cushley S., Duncan H.F., Lappin M.J., Chua P., Elamin A.D., Clarke M. Efficacy of direct pulp capping for management of cariously exposed pulps in permanent teeth: A systematic review and meta-analysis. *Int Endod J.* 2020.
3. Schmidt A., Schäfer E., Dammaschke T. Shear Bond Strength of Lining Materials to Calcium-silicate Cements at Different Time Intervals. *J Adhes Dent.* 2017; 19 (2): 129-135.
4. Kaup M., Schäfer E., Dammaschke T. An in vitro study of different material properties of Biodentine compared to ProRoot MTA. *Head Face Med.* 2015; 11:16.
5. Malkondu Ö., Karapinar Kazandağ M., Kazazoğlu E. A review on biodentine, a contemporary dentine replacement and repair material. *BioMed Res Int.* 2014; 2014: 160951.
6. Koubi G., Colon P., Franquin J.C., Hartmann A., Richard G., Faure M.O. Clinical evaluation of the performance and safety of a new dentine substitute, Biodentine, in the restoration of posterior teeth - a prospective study. *Clin Oral Investig.* 2013; 17 (1): 243-249.
7. Cantekin K., Avci S. Evaluation of shear bond strength of two resin-based composites and glass ionomer cement to pure tricalcium silicate-based cement (Biodentine®). *J Appl Oral Sci.* 2014; 22 (4): 302-306.
8. Heymann H.O., Ritter A.V., Sturdevant C.M. *Sturdevant's Art and Science of Operative Dentistry.* 6th ed. St. Louis, MO: Elsevier/Mosby; 2013.
9. Çolak H., Tokay U., Uzgur R., Uzgur Z., Ercan E., Hamidi M.M. The effect of different adhesives and setting times on bond strength between Biodentine and composite. *J Appl Biomater Funct Mater.* 2016; 14 (2): 217-222.
10. Odabaş M.E., Bani M., Tirali R.E. Shear bond strengths of different adhesive systems to biodentine. *ScientificWorldJournal.* 2013; 2013: 626103.
11. Meraji N., Camilleri J. Bonding over Dentin Replacement Materials. *J Endod.* 2017; 43 (8): 1343-1349.
12. Cengiz E., Ulusoy N. Microshear Bond Strength of Tri-Calcium Silicate-based Cements to Different Restorative Materials. *J Adhes Dent.* 2016; 18 (3): 231-237.
13. Altunsoy M., Tanriver M., Ok E., Kucukyilmaz E. Shear Bond Strength of a Self-adhering Flowable Composite and a Flowa-

- ble Base Composite to Mineral Trioxide Aggregate, Calcium-enriched Mixture Cement, and Biodentine. *J Endod.* 2015; 41 (10): 1691-1695.
14. Cantekin K., Avci S. Evaluation of shear bond strength of two resin-based composites and glass ionomer cement to pure tricalcium silicate-based cement (Biodentine(R)). *J Appl Oral Sci: revista FOB* 2014; 22 (4): 302-306.
 15. International Standards Organization. ISO/TS 11405. Dentistry-Testing of Adhesion to Tooth Structure. Geneva, Switzerland: ISO; 2015.
 16. Alzraikat H., Taha N.A., Qasrawi D., Burrow M.F. Shear bond strength of a novel light cured calcium silicate based-cement to resin composite using different adhesive systems. *Dent Mater J.* 2016; 35: 881-887. <https://doi.org/10.4012/dmj.2016-075>
 17. Tsujimoto M., Tsujimoto Y., Ookubo A., Shiraishi T., Watanabe I., Yamada S., Hayashi Y. Timing for composite resin placement on mineral trioxide aggregate. *J Endod.* 2013;39:1167-1170. <https://doi.org/10.1016/j.joen.2013.06.009>
 18. Ahmed M.H., Yoshihara K., Mercelis B., Van Landuyt K., Peumans M., Van Meerbeek B. Quick bonding using a universal adhesive. *Clin Oral Investig.* 2020; 24 (8): 2837-2851. doi: 10.1007/s00784-019-03149-8
 19. Kuraray Noritake (2018) Clearfil Universal Bond quick brochure. <https://kuraraydental.com/wp-content/uploads/2018/12/clearfil-universal-bond-quick-new-cap-brochure-sm.pdf> Accessed 01 Nov 2018
 20. Hashem D.F., Foxton R., Manoharan A., et al. The physical characteristics of resin composite calcium silicate interface as part of a layered/laminate adhesive restoration. *Dent Mater.* 2014; 30: 343-349.
 21. Camilleri J. Investigation of Biodentine as dentine replacement material. *J Dent.* 2013; 41: 600-610.
 22. Anastasiadis K., Koulaouzidou E.A., Palaghias G., Eliades G. Bonding of composite to base materials: effects of adhesive treatments on base surface properties and bond strength. *J Adhes Dent.* 2018; 20: 151-164. <https://doi.org/10.3290/j.jad.a40302>
 23. Mahdan M.H., Nakajima M., Foxton R.M., Tagami J. Combined effect of smear layer characteristics and hydrostatic pulpal pressure on dentine bond strength of HEMA-free and HEMA-containing adhesives. *J Dent.* 2013; 41: 861-871. <https://doi.org/10.1016/j.jdent.2013.07.002>
 24. Gregoire G., Dabsie F., Dieng-Sarr F., Akon B., Sharrock P. Solvent composition of one-step self-etch adhesives and dentine wettability. *J Dent.* 2011; 39: 30-39. <https://doi.org/10.1016/j.jdent.2010.09.008>
 25. Sezinando A. Looking for the ideal adhesive—a review. *Rev Port Estomatol Med Dent Circ Maxilofac.* 2014; 55: 194-206. <https://doi.org/10.1016/j.rpemd.2014.07.004>
 26. Namazikhah M.S., Nekoofar M.H., Sheykhrezae M.S., et al. The effect of pH on surface hardness and microstructure of mineral trioxide aggregate. *Int Endod J.* 2008; 41: 108-116.
 27. Shokouhinejad N., Nekoofar M.H., Irvani A. Effect of acidic environment on the push-out bond strength of mineral trioxide aggregate. *J Endod.* 2010; 36: 871-874.
 28. Torabinejad M., Chivian N. Clinical applications of mineral trioxide aggregate. *J Endod.* 1999; 25: 197-205.
 29. Watts J.D., Holt D.M., Beeson T.J., et al. Effects of pH and mixing agents on the temporal setting of tooth-colored and gray mineral trioxide aggregate. *J Endod.* 2007; 33: 970-973.
 30. Roy C.O., Jeanson B.G., Gerrets T.F. Effect of an acid environment on leakage of root-end filling materials. *J Endod.* 2001; 27: 7-8.
 31. Ilie N., Keßler A., Durner J. Influence of various irradiation processes on the mecha-

- nical properties and polymerisation kinetics of bulk-fill resin based composites. *J Dent.* 2013;41:695-702.
32. Van Ende A., De Munck J., Van Landuyt K.L., Poitevin A., Peumans M., Van Meerbeek B., et al. Bulk-filling of high C-factor posterior cavities: Effect on adhesion to cavity-bottom dentin. *Dent Mater.* 2013; 29: 269-277.
33. Moorthy A., Hogg C.H., Dowling A.H., Grufferty B.F., Benetti A.R., Fleming G.J., et al. Cuspal deflection and microleakage in premolar teeth restored with bulk-fill flowable resin-based composite base materials. *J Dent.* 2012; 40: 500-505.
34. Saito T., Takamizawa T., Ishii R., Tsujimoto A., et al. Influence of Application Time on Dentin Bond Performance in Different Etching Modes of Universal Adhesives. *Oper Dent.* 2020; 45 (2): 183-195.
35. Palma P.J., Marques J.A., Falacho R.I., Vinagre A., Santos J.M., Ramos J.C. Does delayed restoration improve shear bond strength of different restorative protocols to calcium silicate-based cements?. *Materials (Basel).* 2018;11. <https://doi.org/10.3390/ma11112216>
36. Oskoe S.S., Kimyai S., Bahari M., Motahari P., Eghbal M.J., Asgary S. Comparison of shear bond strength of calcium-enriched mixture cement and mineral trioxide aggregate to composite resin. *J Contemp Dent Pract.* 2011; 12: 457-462. <https://doi.org/10.5005/jpjournal-10024-1076>
37. Bachoo I.K., Seymour D., Brunton P. A biocompatible and bioactive replacement for dentine: is this a reality? The properties and uses of a novel calcium-based cement. *Br Dent J.* 2013; 214 (2): 1-7.
38. Placido E., Meira J.B.C., Lima R.G., Muench A., de Souza R.M., Ballester R.Y. Shear versus micro-shear bond strength test: a finite element stress analysis. *Dent Mater.* 2007; 23 (9): 1086-1092.



Attribution (BY-NC) - (BY) You must give appropriate credit, provide a link to the license, and indicate if changes were made. You may do so in any reasonable manner, but not in any way that suggest the licensor endorses you or your use. (NC) You may not use the material for commercial purposes.