

Received:
12-X-2021

How Does Radiotherapy Affect the Adhesion of Universal Adhesive to Enamel and Dentin? A Qualitative and Quantitative Analysis?

Accepted:
24-I-2022

Published Online:
1-IV-2022

Efecto de la radioterapia a la adhesión del adhesivo universal al esmalte y dentina? Un análisis cualitativo y cuantitativo?

Burcu Oglakci DDS¹; Defne Burduroğlu DDS, PhD²; Ali Hikmet Eriş³; Alpaslan Mayadağlı MD⁴; Neslihan Arhun DDS, PhD⁵

1. Assistant Professor, Bezmialem Vakif University Faculty of Dentistry, Department of Restorative Dentistry, Istanbul, Turkey. <https://orcid.org/0000-0002-6587-5997>

2. Prosthetic Dentistry Specialist, Bezmialem Vakif University Faculty of Dentistry, Department of Prosthetic Dentistry, Istanbul, Turkey. <https://orcid.org/0000-0003-4398-3345>

3. Medical Radiophysic Specialist, Bezmialem Vakif University Faculty of Medicine, Department of Radiation Oncology, Istanbul, Turkey. <https://orcid.org/0000-0001-7118-2348>

4. Professor, Bezmialem Vakif University Faculty of Medicine, Department of Radiation Oncology, Istanbul, Turkey. <https://orcid.org/0000-0003-3463-563X>

5. Professor, Başkent University Faculty of Dentistry, Department of Restorative Dentistry, Ankara, Turkey. <https://orcid.org/0000-0001-7752-5241>

Correspondence to: Dr. Burcu Oglakci - burcu923@hotmail.com

ABSTRACT: This study investigated the shear bond strength (SBS) of a universal adhesive to enamel/dentin; 1) that had undergone radiotherapy (RT) and 2) that were readily restored and had undergone RT. Enamel and dentin surfaces were obtained from 90 intact human molars. They were randomly divided into six groups according to the presence and timing of irradiation (RT0:no radiotherapy/control, RT1:RT before restoration, RT2:RT after restoration groups) and adhesive application modes (etch&rinse/ER, self-etch/SE)(n=15). A universal adhesive and resin composites were applied. The radiotherapy protocol was conducted with 60 Gy. The SBS test was subjected (1mm/min) and failure type analysis was performed. The resin-enamel/dentin interfaces were examined. Data were statistically analyzed. For enamel and dentin, the presence and timing of irradiation did not significantly influence the SBS values ($p>0.05$). For enamel, significantly higher SBS values were obtained using etch&rinse mode than self-etch mode ($p<0.05$). The predominant failure was mixed type. Loss of enamel prisms and obliterated irregular dentinal tubules were found for the radiotherapy-treated specimens. Resin tags were clearer in the irradiated enamel treated with ER than SE. Irradiation with different timings did not influence the bond

strength to enamel and dentin, negatively. Irrespective of radiotherapy, the etch&rinse mode caused higher bond strength to enamel than self-etch mode.

KEYWORDS: Head and neck cancer; Radiotherapy; Shear bond strength; Universal adhesive; Scanning electron microscope.

RESUMEN: Este estudio investigó la fuerza de unión al cizallamiento (SBS) de un adhesivo universal al esmalte/dentina en piezas que se habían sometido a radioterapia (RT). Se obtuvieron superficies de esmalte y dentina de 90 molares humanos intactos. Se dividieron aleatoriamente en seis grupos según la presencia y el momento de la irradiación (RT0: sin radioterapia/control, RT1: RT antes de la restauración, RT2: RT después de la restauración considerando los modos de aplicación del adhesivo (n=15). Se aplicó un adhesivo universal y resinas compuestas. El protocolo de radioterapia se realizó con 60 Gy. Se sometió a la prueba adhesiva (1mm/min) y se realizó análisis del tipo de falla. Se examinaron las interfases resina-esmalte/dentina. Los datos fueron analizados estadísticamente. Para el esmalte y la dentina, la presencia y el momento de la irradiación no influyeron significativamente en los valores adhesivos ($p>0,05$). Para el esmalte, se obtuvieron valores adhesivos significativamente más altos utilizando el modo de grabado y enjuague que el modo de autograbado ($p<0,05$). La falla predominante fue de tipo mixto. Se encontró pérdida de prismas de esmalte y túbulos dentinarios irregulares obliterados en las muestras tratadas con radioterapia. La irradiación con diferentes tiempos no influyó negativamente en la fuerza de unión al esmalte ni a la dentina. Independientemente de la radioterapia, el modo de grabado ácido y enjuague provocó una mayor fuerza de adhesión al esmalte que el modo de autograbado.

Palabras clave: Cáncer de cabeza y cuello; Radioterapia; Resistencia al cizallamiento; Adhesivo universal; Microscopio electrónico de barrido.

INTRODUCTION

Head and neck cancer (HNC) can attack various parts of the body in the upper aerodigestive tract, such as the oral and nasal cavity, the salivary and thyroid glands, the pharynx, the larynx and the paranasal sinuses (1). The treatment options include radiotherapy and surgery, depending on the stage and locations of the tumors. However, radiotherapy is also a palliative treatment option for inoperable late-stage tumors (2). Between 42% and 84% of HNC patients receive radiotherapy with increased survival rates (3).

Decreased saliva due to salivary gland hypofunction (4), radiation caries and periodontal disease (5) are the foremost adverse impacts of radiotherapy. A recent systematic review concluded that 21% and 24% dental caries prevalence rates had been reported following HNC radiotherapy and chemo-radiotherapy, respectively (5). Thus, due to this high risk, the regimen of an HNC patient necessitates a multidisciplinary team working with dental and medical clinicians.

Radiotherapy alerts cellular destruction by deoxyribonucleic acid (DNA) damage, preventing

cell replication (6). Although not targeted, the tooth structures are inevitably affected by ionizing radiation applied to the maxillofacial region, but the literature contains contradictory findings. Several *in vitro* studies have indicated that the changes in the structure of enamel, dentin and the dentino-enamel junction are mostly dose dependent, and high doses could impair stability (7,8). The potential side effects of radiotherapy involve a lack of enamel prism, collagen fiber degeneration, obliterated dentinal tubules, gap formation at the enamel-dentin junction and decrease in microhardness (9,10).

Due to the aforementioned changes in tooth structure, researchers focus on the adhesion mechanisms of restorative materials used on radiotherapy-treated teeth. Additionally, radiotherapy may also affect readily restored enamel and dentin structures. Therefore, it is critical for an HNC patient to organize a timely treatment plan, with the use of the most beneficial adhesive system to achieve optimized treatment. However, there are controversial results, which are attributed to the selection of adhesive systems (11,12,13). Thus, adhesive systems must be chosen according to the substrate, and the selection of the most appropriate restorative material may be important under irradiated circumstances (14).

The latest generation of adhesives is referred to as “universal adhesives” and has been extensively implemented due to their versatility. Universal adhesives offer advantages to clinicians because of their user-friendly, simplified application protocols and multi-mode applicability on various substrates with etch&rinse and self-etch modes (15). However, it is unclear how these adhesive systems act on radiotherapy-affected dental structures.

Thus, the aims of this *in vitro* study were to investigate the shear bond strength (SBS) of a universal adhesive system to enamel and dentin; 1) that had undergone radiotherapy and 2) that were

readily restored and had undergone radiotherapy in etch&rinse and self-etch modes.

The study’s null hypothesis was as follows:

Irradiation with different timings would not affect the SBS of a universal adhesive to enamel and dentin applied in self-etch and etch&rinse modes.

MATERIALS AND METHODS

The local ethics committee approved this *in vitro* study (Process no.11/265).

SAMPLE SIZE CALCULATION

The sample size calculation was performed based on the estimated effect size between groups, according to the literature (16). In this study, 15 specimens were required for each group to obtain a medium effect size ($d=0.50$), using 95% power and a 5% type 1 error rate.

SPECIMEN PREPARATION AND RESTORATIVE PROCEDURE

The chemical compositions of restorative materials employed in this study are listed in Table 1. The independent variables tested are as follows:

- Presence and timing of irradiation (RT0: no radiotherapy/control, RT1: radiotherapy before restoration and RT2: radiotherapy after restoration).
- The type of application mode of adhesive system (etch&rinse and self-etch modes).

A total of 90 anonymized caries-free, intact human molars were used and kept in a saline solution until the experimental procedures. A schematic illustration of the experimental protocol is presented in Figure 1. The allocated groups are listed in Table 2. The teeth were randomly divided into six groups with respect to the presence and timing of irradiation and adhesive application types ($n=15$) (D.B.).

First, #120-grit silicon carbide (SiC) paper (Fuji Star Type DDC, Saitama, Japan) was used on the buccal and lingual surfaces of the teeth to create flat enamel and dentin surfaces under water cooling. Then, 600-grit SiC paper was applied with

water cooling to obtain a standard smear layer using a metallographic polishing device (Minitech 233, Presi Grenoble, France). The dentin specimens were controlled for lack of enamel using a stereomicroscope (SMZ 1000, Nikon, Japan).

Table 1. The brand names/manufacturers, batch numbers and chemical composition of restorative materials used in this study.

Brand names	Manufacturer	Batch number	Composition
ScotchbondTM Universal Etchant	3M ESPE, St Paul, MN, USA	4550701	32wt% phosphoric acid, 60% water, 5% syntetic amorphous silica.
Clearfil Universal Bond Quick	Kuraray, Okayama, JAPAN	7B0219	10-MDP, Bis-GMA, HEMA, hydrophilic amide monomers, Colloidal silica, Silane coupling agent, Sodium fluoride, Camphorquinone, Ethanol, Water (pH=2.3).
Estelite Posterior Quick (A2 Shade)	Tokuyama Dental Corp., Tokyo, JAPAN	025E10	Organic Matrix Composition: Bis-GMA, TEGDMA, Bis-MPEPP. Radical-Amplified Photopolymerization initiator technology (RAP) norganic Filler Particulate: (83%wt, 70% vol) Silica-zirconia filler: 0.1-10µm(2µm).

Abbreviations: 10-MDP, 10-methacryloyloxydecyl dihydrogen phosphate; BIS-GMA, bisphenol A glycidyl methacrylate; HEMA, 2-hydroxyethyl methacrylate; TEGDMA, triethylene glycol dimethacrylate; Bis-MPEPP, bis-methacryloyloxyethoxy phenyl propane; µm, micrometer; wt%, weight percentage; vol%, volume percentage; µm, micrometer; nm, nanometer.

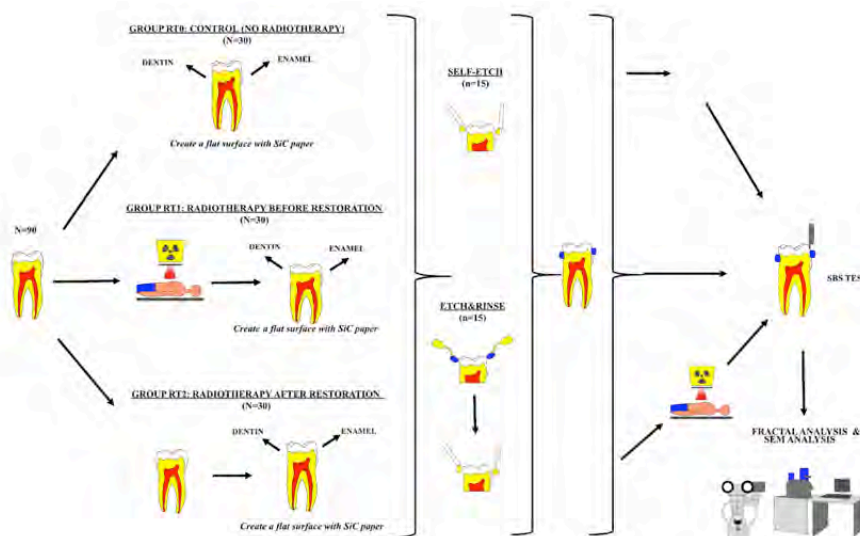


Figure 1. A schematic illustration of the experimental protocol.

Table 2. Allocation of the groups.

		N	Application Mode of Adhesive System (Clearfil Universal Bond Quick)	Resin Composite
Enamel	RT0 (No radiotherapy)	15	Etch&Rinse*	Estelite Posterior Quick
		15	Self-Etch**	
	RT1 (Radiotherapy before restoration)	15	Etch&Rinse	
		15	Self-Etch	
	RT2 (Radiotherapy after restoration)	15	Etch&Rinse	
		15	Self-Etch	
Dentin	RT0 (No radiotherapy)	15	Etch&Rinse	
		15	Self-Etch	
	RT1 (Radiotherapy before restoration)	15	Etch&Rinse	
		15	Self-Etch	
	RT2 (Radiotherapy after restoration)	15	Etch&Rinse	
		15	Self-Etch	

* Clearfil Universal Bond Quick in Etch&Rinse Mode; ** Clearfil Universal Bond Quick in Self-Etch Mode.

Group RT0+E&R (No Radiotherapy/Control with etch&rinse mode): This group did not receive radiotherapy. The enamel and dentin surfaces were created as mentioned above and etched with 37% phosphoric acid (Scotchbond Universal Etchant, 3M ESPE, St Paul MN, USA) for 15s, rinsed with water for 10s and dried with cotton pellets. Universal adhesive (Clearfil Universal Bond Quick, Kuraray, Okayama, Japan) was used with a rubbing motion with a microbrush, gently air dried until the bond did not move and light cured for 10s (irradiance of 1,000 mW/cm², wavelength 385-515nm) with a third-generation polywave light-emitting diode (LED) light-curing unit (Valo, Ultradent, South Jordan, UT, USA). The light intensity was checked using a radiometer (Demetron LED Radiometer, Kerr Corp. CA, USA). In accordance with ISO 29022 (17), a cylinder-shaped Teflon mold (diameter: 2.4mm, height: 2mm) was placed on the adhesive surfaces of the enamel and dentin, and composite resin (Estelite Posterior Quick, Tokuyama Dental Corp., Tokyo, Japan) was inserted in a single increment and light cured with an LED light-curing unit for

10s. After removal of the molds, the composite resin was light cured again for 10s.

Group RT0+SE (No Radiotherapy/Control with self-etch mode): This group did not receive radiotherapy. The enamel and dentin surfaces were created as mentioned above. Universal adhesive was applied without acid etching, as described for the etch&rinse groups. The restoration procedures were applied as described for the etch&rinse group.

Group RT1+E&R (Radiotherapy before restoration with etch&rinse mode): The specimens enrolled in this group first received radiotherapy in distilled water in accordance with the primary and post-op definitive standard experimental radiotherapy protocol for treating HNC cancers whose details would be explained later in that section (30 fractions as daily 2 Gray per fraction, five days weekly for six weeks, and the total given dose, was 60 Gy).

Then, the enamel and dentin surfaces were created as mentioned above. The adhesive system

with etch&rinse application and restorative procedures was applied as mentioned before.

Group RT1+SE (Radiotherapy before restoration with self-etch mode): The specimens enrolled in this group first received radiotherapy in distilled water in accordance with the primary and post-op definitive standard experimental radiotherapy protocol as mentioned above. Then, the enamel and dentin surfaces were created as described before. The adhesive system with self-etch application protocol and restorative procedures was applied.

Group RT2+E&R (Radiotherapy after restoration with etch&rinse mode): The enamel and dentin surfaces were created as described before. The adhesive system with etch&rinse application protocol and restorative procedures was applied. Then, the specimens received radiotherapy in distilled water according to the primary and post-op definitive standard experimental radiotherapy protocol as mentioned above.

Group RT2+SE (Radiotherapy after restoration with self-etch mode): The enamel and dentin surfaces were created as described before. The adhesive system with self-etch application and restorative procedures was applied. Then, the specimens received radiotherapy in distilled water according to the primary and post-op definitive standard experimental radiotherapy protocol as mentioned above.

All the restorative procedures were completed in accordance with the manufacturers' instructions. All restorative procedures were done by a single operator who was blinded to the presence and timing of irradiation (B.O.). Besides, all specimens were kept in non-irradiated distilled water between radiotherapy cycles until SBS test.

RADIOTHERAPY PROTOCOL

The radiotherapy treatment of the specimens was performed at the Radiotherapy Center of the Oncology Clinic. Before the irradiation, the output dose of the device and deep dose tables were used. Manual planning was performed to mimic the clinical scenario of an adult patient with HNC. During the planning process, the analytical anisotropic algorithm dose calculation was employed to provide the same radiation dose to the specimens. Specimens were placed on wax plates extended to 2mm away from the cemento-enamel junction and positioned 0.5cm apart from each other to prevent scattering and allow for direct irradiation. The wax plates were fixed in a plastic container filled with distilled water, imitating the oral cavity (18).

Then 1.25 MeV gamma rays were delivered to the specimens through a direct field on the surface of each tooth, using a Cobalt60 device (CisBio International CIRUS model teletherapy device, 312TBq, Healvita GmbH, Vienna, Austria). Irradiation of non-radioactive cobalt 59 with neutron results in the radioactive element COBALT 60 and two gamma energies formed in the nuclear reactor. Because of the radioactive decay of the $^{27}\text{Co}60$ element, two gamma energies are formed, 1.1732 MeV and 1.3325 MeV. The 1.25 MeV used in the treatment is the arithmetic mean of both of these gamma energies. The distance of the material surface from the source was 80cm, and the surface area to be irradiated was 12 x 12 cm². The irradiation dose rate was 29.83 cGy/min. The irradiation room temperature was determined as 24C°, the pressure was P=1019 (hpa), and the humidity was kept at 60%. The maximum dose depth of Cobalt 60 gamma rays is 0.5cm. Fixed irradiation was performed with a 98% deep dose. Irradiation was completed in 30 fractions as daily 2 Gray per

fraction, five days weekly for six weeks, and the total given dose, separately in both groups, was 60 Gy (19). Quality control was performed using a dosimeter. The process of radiotherapy was carried out by a physician (A.H.E.).

SHEAR BOND STRENGTH TEST

A notched-edge SBS test was performed using a universal test machine (AGS-X, Shimadzu Corp., Japan) (crosshead speed of 1mm/min) by a blinded investigator. The testing load was directly applied at the tooth-restoration interface until the fracture, with a notched-edge crosshead matching the diameter of the bonded cylinder (20). SBS values were calculated by dividing the maximum load (N) at the time of the fracture by the adhesion area (mm²), recorded as Newtons and converted to MPa.

FAILURE TYPE ANALYSIS

Failure type analysis was performed using a stereomicroscope under 15x magnification to determine the failure modes. The failure mode was recorded as an “adhesive” failure if the fracture occurred along the junction of the resin composite and enamel/dentin, the failure mode was recorded as a “cohesive” failure if the fracture occurred in the resin composite or enamel/dentin, and the failure mode was recorded as a “mixed” failure if the fracture occurred in the resin composite or enamel/dentin.

ENVIRONMENTAL SCANNING ELECTRON MICROSCOPE ANALYSIS

For morphological analysis, one representative specimen from radiotherapy-treated and non-treated enamel and dentin surfaces were prepared and the adhesive system was applied as mentioned before. Then, they were stored in distilled water at 37°C for 24 h and then sectioned lengthwise with a low-speed diamond saw

under water cooling. The sectioned surfaces were submerged in 6 N HCL for 30s to demineralize the dentin, then rinsed with water for 5min. Then they were submerged in 3% NaOCl for 10min and rinsed with water for 5min. A desiccator was used to dehydrate the specimens for 12h (21). They were fixed on aluminum stubs for platinum coating. The specimens were analyzed on sagittal plane under an environmental scanning electron microscope (E-SEM) (E-SEM; FEI QUANTA FEG 250, Oregon, USA) to evaluate the resin–enamel/dentin interface in a secondary mode at an accelerating voltage of 10-30 kV. The micromorphology of representative surfaces was obtained at 1,000x and 2,500x magnification. An operator who was unaware of the presence and timing of irradiation or type of application mode performed all the E-SEM analyses.

STATISTICAL ANALYSIS

Statistical analysis was conducted with SPSS 22.0 for Windows. The Shapiro-Wilk test was first used to indicate the normality of variables, and the data were then analyzed with Levene’s test for homogeneity of variances. The data were normally distributed. A two-way analysis of variance (ANOVA) was performed to analyze if study factors were significant or not. All pairwise comparisons were done using the Bonferroni test. Statistical significance was considered at a confidence level of 0.05 for all analyses.

RESULTS

SHEAR BOND STRENGTH TEST

Tables 3 and 4 present the mean SBS values with standard deviations in MPa of the tested groups for enamel and dentin, respectively. For enamel, two-way ANOVA showed that the type of application mode of adhesive system (etch&rins and self-etch modes) significantly influenced the SBS values ($p < 0.05$), whereas the presence

and timing of irradiation (RT0:no radiotherapy/control, RT1: radiotherapy before restoration and RT2:radiotherapy after restoration) did not significantly ($p>0.05$). Besides, the interaction between these two study factors had no significant effect on the SBS values ($p>0.05$). Bonferroni test indicated that significantly higher SBS values were obtained using etch&rinse mode than self-etch mode ($p>0.05$). For dentin, two-way ANOVA showed that either the presence or timing of irradiation or type of application mode of adhesive system did not significantly influence the SBS values. Besides, the study factors had no significant effect on the SBS values ($p>0.05$).

FAILURE TYPE ANALYSIS

Table 4 presents the failure type analysis after the SBS test for all tested groups. Regarding enamel, the predominant failure mode was the mixed type for all tested groups. The second most frequently observed failure mode was the cohesive type with the etch&rinse application mode, while no cohesive failures were observed for the groups with the self-etch application mode. Group RT1+SE exhibited only the mixed type of failure. Regarding dentin, the predominant failure mode was the mixed type for all tested groups. The second most frequently observed failure mode was the adhesive type for all tested groups and it

is the predominant failure mode in Group RT2+SE. Additionally, no cohesive failures were detected for most of the tested groups.

ENVIRONMENTAL SCANNING ELECTRON MICROSCOPE ANALYSIS

Representative SEM images of the resin-enamel/dentin are illustrated in Figure 2. Non-irradiated enamel specimens indicated regular healthy enamel with the regular presence of prisms (Figure 2.A and Figure 2.C) (white arrow). Irradiated enamel specimens indicated a shorter and rounded prism appearance, and loss of enamel prisms was detected in some areas (Figure 2.B and Figure 2.D) (white square). Non-irradiated dentin specimens exhibited regular and significant dentinal tubule structures (Figure 2.E and Figure 2.G), where as irradiated dentin specimens had irregular and obliterated dentinal tubules (Figure 2.F and Figure 2.H) (red arrow). Few resin tags were clearer in the irradiated enamel specimens treated with the etch-rinse approach (Figure 2.B) (black circle), while those treated via the self-etch approach (Figure 2.D). Additionally, non-irradiated dentin specimens treated with the self-etch mode indicated resin tag formations (black arrows) (Figure 2.G), whereas irradiated specimens had a thin hybrid layer appearance without resin tags (Figure 2.H).

Table 3. The mean shear bond strength values (SBS) and standard deviations (\pm SD) of all tested groups for enamel in MPa ($n=15$).

	E&R	SE	P values between E&R and SE	P values of radiotherapy's effect	Interaction effect of application mode and radiotherapy
RT0 (No radiotherapy/control)	19,07 \pm 9,13	14,5 \pm 9,8	0,003	0,877	0,546
RT1 (Radiotherapy before restoration)	17,8 \pm 10,77	13,3 \pm 7,99			
RT2 (Radiotherapy after restoration)	20,99 \pm 11,6	11,77 \pm 6,82			
General Average	19,28 \pm 10,39	13,19 \pm 8,18			

* A two-way analysis of variance (ANOVA) indicated that the study factors were significant or not. All pairwise comparisons were done using the Bonferroni test ($p<0.05$).

Table 4. The mean shear bond strength values (SBS) and standard deviations (\pm SD) of all tested groups for dentin in MPa (n=15).

	E&R	SE	P values between E&R and SE	P values of radiotherapy's effect	Interaction effect of application mode and radiotherapy
RT0 (No radiotherapy/control)	16,79 \pm 4,8	20,66 \pm 10,68	0,935	0,053	0,288
RT1 (Radiotherapy before restoration)	15,7 \pm 7,95	13,67 \pm 9,85			
RT2 (Radiotherapy after restoration)	14,73 \pm 7,99	12,45 \pm 8,42			

* A two-way analysis of variance (ANOVA) indicated that the study factors were not significant ($p>0.05$).

Table 5. Failure type analysis after SBS test for all tested groups (%).

Adhesive Application Mode		Adhesive	Cohesive in the resin composite	Cohesive in enamel/dentin	Mixed	
ENAMEL	E&R	RT0 (No radiotherapy/control)	6,66	13,33	13,33	66,66
		RT1 (Radiotherapy before restoration)	6,66	0	26,66	66,66
		RT2 (Radiotherapy after restoration)	0	13,5	26,5	60
	SE	RT0 (No radiotherapy/control)	26,66	0	0	73,33
		RT1 (Radiotherapy before restoration)	0	0	0	100
		RT2 (Radiotherapy after restoration)	20	0	0	80
DENTIN	E&R	RT0 (No radiotherapy/control)	33,33	0	0	66,66
		RT1 (Radiotherapy before restoration)	20	6,66	0	73,33
		RT2 (Radiotherapy after restoration)	13,33	0	0	86,66
	SE	RT0 (No radiotherapy/control)	20	0	0	80
		RT1 (Radiotherapy before restoration)	13,33	0	0	86,66
		RT2 (Radiotherapy after restoration)	40	0	0	60

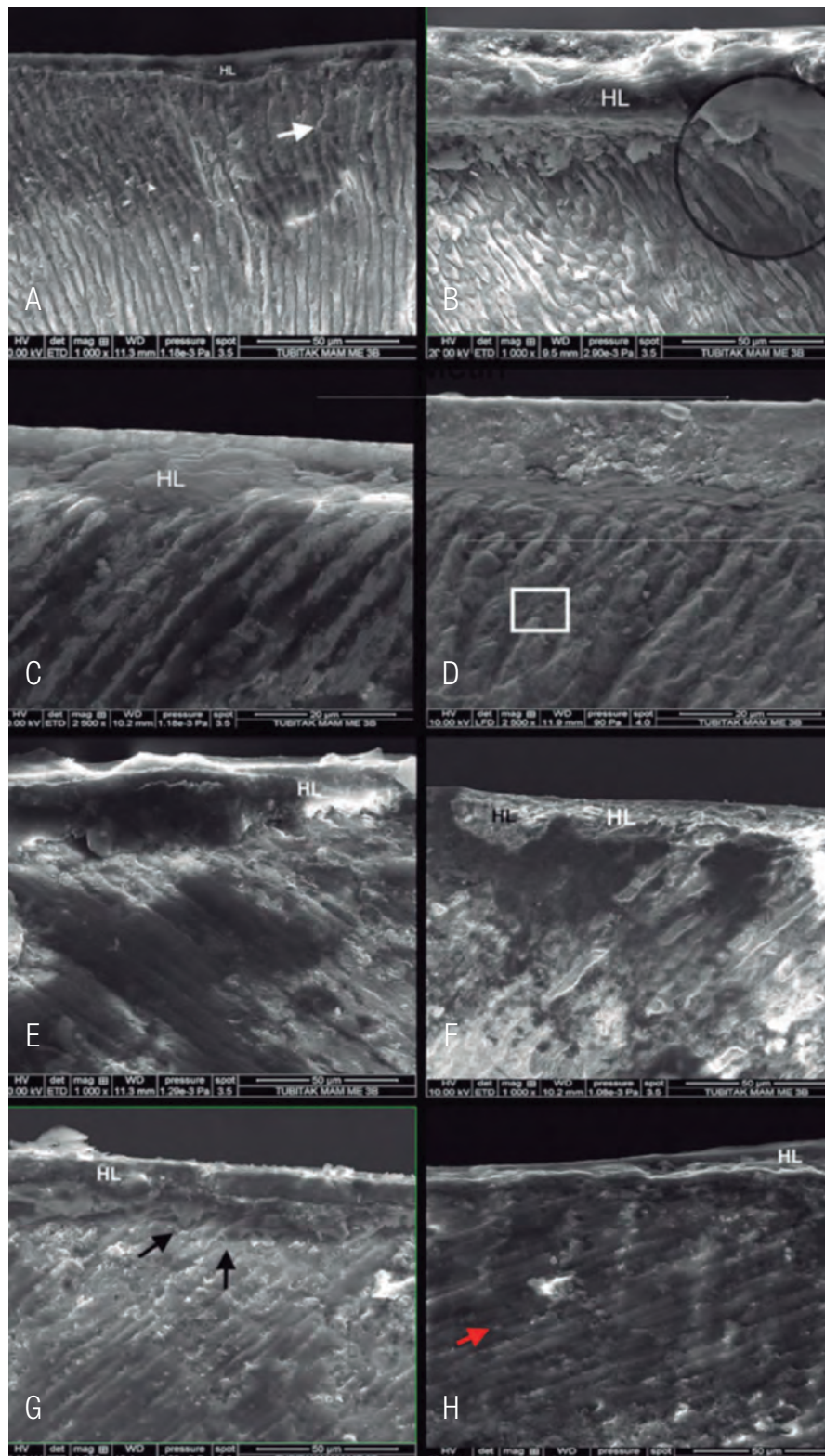


Figure 2. E-SEM micrographs of all tested groups at 1000x and 2500x magnification. A) non-irradiated enamel with ER mode, B) irradiated enamel with ER mode, C) non-irradiated enamel with SE mode, D) irradiated enamel with SE mode, E) non-irradiated dentin with ER mode, F) irradiated dentin with ER mode, G) non-irradiated dentin with SE mode, H) irradiated dentin with SE mode. HL: hybrid layer, black circle and black arrows: resin tags, white arrows: regular presence of prism, white square: loss of enamel prism, red arrow: obliterated dentinal tubules.

DISCUSSION

In this study, the SBS of a universal adhesive system to enamel and dentin; 1) that had undergone radiotherapy and 2) that were readily restored and had undergone radiotherapy in etch&rinse and self-etch modes was investigated. Based on the results, the null hypothesis, that irradiation with different timings would not affect the SBS of a universal adhesive to enamel and dentin applied in self-etch and etch&rinse modes, was partially rejected.

HNC affects more than 550,000 people worldwide every year (22). Parallel to the increasing lifespan of populations, the incidence of neoplastic diseases has increased, and people use their teeth for longer periods. Thus, dentists should be aware of the adverse effects of radiotherapy to treat HNC patients, both before and after the radiation protocol (18). Despite the benefits of radiotherapy, the harmful effect of radiotherapy on hard dental tissues is pronounced, with increasing doses, resulting in morphological changes on both enamel and dentin, decreases in microhardness and gap formation at the enamel-dentin junction (9,10,23). Additionally, it has also been reported that the tooth-restoration interface could be negatively affected by the degenerated collagen network and obliterated dentin tubules in the hybrid layer (24). It is also important to emphasize that radiotherapy could also influence the properties of restorative materials in terms of surface roughness, flexural strength, microhardness and water sorption (25).

The radiotherapy protocol used in this study used in the previous study and actual clinical scenarios and consisted of cumulative fractionated doses of 2 Gy daily on weekdays, until the final dose of 60 Gy (26). The design of the methodology included the usage of molar teeth, since molar teeth have received the highest dose of radiation during radiotherapy (27). During the radiotherapy protocol, the specimens were kept in distilled water since submersion in artificial saliva could

hamper proper delivery of the irradiation because of its viscosity and high concentration of ions (18).

Ionizing radiation induces the action of reactive oxygen species (ROS), such as hydroxyl radicals, superoxide anion and hydrogen peroxide (28). The formation of free radicals and the radiolysis of water molecules could lead to cell necrosis (29). Reactive oxygen species could be produced in dental tissues with higher water content levels such as dentin, but also on the storage media of teeth subjected to *in vitro* radiotherapy. Additionally, although water constitutes an insignificant portion of enamel, its involvement affects the mechanical properties of the structure when it is dehydrated (30). In this respect, ROS could behave as a polymerization inhibitor of the adhesive system, influencing its immediate bond strength to dentin or enamel (31). In this study, no significant differences in SBS were observed for the enamel and dentin specimens treated with the etch&rinse and self-etch modes, irrespective of the radiation protocol. This finding agrees with Da Cuncha *et al.*, (24) who reported that radiotherapy did not influence the bond strength of a universal adhesive to enamel and dentin. Additionally, Gernhardt *et al.* (32) reported that no significant differences in dentin bond strength were observed between the irradiated and non-irradiated groups. However, previous studies (31,33) have indicated that radiotherapy before restoration group exhibit lower dentin bond strength values compared to the no-radiotherapy group. Arid *et al.*, (26) who evaluated the SBS values of enamel and dentin specimens with different radiotherapy scenarios after application of the self-etch and etch&rinse adhesive systems, reported that radiotherapy after restoration groups had significantly lower SBS than the no-radiotherapy groups for both enamel and dentin. Biscaro *et al.* (34) reported that a radiotherapy after restoration had lower dentin bond strength values than a no-radiotherapy group with the application of the etch&rinse and self-etch adhesive systems. The divergence

in outcomes can be attributed to the differences in types of adhesive systems and methodologies. Ozan *et al.*, (12) who evaluated the dentin bond strength of universal adhesives, reported that their radiotherapy before restoration group had lower bond strength values than their no-radiotherapy group with the application of the etch&rinse mode. The divergence in outcomes can be related to the differences in the types of specimens they used (extracted radiotherapy-treated teeth).

In the past decade, manufacturers have introduced universal adhesives with a “quick bonding” protocol on different substrates. The universal adhesive system used in this study, contains 10-methacryloyloxydecyl dihydrogen phosphate (10-MDP) and a newly developed hydrophilic amide monomer and features a mild acidic pH. In past research, 10-MDP establishes an intensive and stable chemical interaction with hydroxyapatite. The MDP-Ca water-insoluble salts promote the preservation of collagen fibers (35). The hydrophilic amide monomer would have a higher setting ability; hence, the formed polymer would be robust to hydrolysis. Additionally, as the monomer has a higher hydrophilic potential than 2-hydroxyethyl methacrylate, it has good wettability to dental tissues (36). In this study, concerning the application mode of universal adhesive systems, the etch&rinse mode caused significantly higher enamel SBS values than the self-etch mode for all radiation protocols. This finding is in contrast with the results of Arid *et al.*, (26) who reported that etch&rinse adhesive systems produced lower SBS than self-etch adhesive systems after radiotherapy since radiotherapy could make enamel more porous. The divergence in outcomes can be attributed to the differences in types of adhesive systems they used. Besides, in this study, according to the application modes, for the no radiotherapy group, no significant differences were found for enamel and dentin. Similar to this study, Hanabusa *et al.*

(15) stated that the dentin bond strength of the application of the etch&rinse mode was similar to the strength of the self-etch mode. This finding is in contrast with Sai *et al.*, (37) who reported that etch&rinse application caused higher SBS values than the self-etch approach. This divergence in outcomes can be attributed to the different type of specimen they used (bovine incisors).

In this study, stereomicroscope observations highlighted that the predominant mode of failure was the mixed type. Irradiated enamel specimens treated with the self-etch mode for the radiotherapy before restoration exhibited the highest frequency of mixed type failures, which may contribute to the high bond strength values. This indicated that the quality of the bond strength at the interface is such that it exceeds both the cohesive strength of dental tissues or restorative materials and the adhesive strength between the interfacial layers, providing an adhesive interfacial bonding that presents greater strength when acting as a single structure (38). What is more, the frequency of cohesive failure, in addition to mixed failures, tended to increase for the etch-rinse mode with irradiated enamel specimens. Therefore, failure type analysis of the specimens suggested that phosphoric acid pre-etching can contribute to the adhesion of irradiated enamel by establishing micromechanical interlocking. An increase in adhesive failures and a decrease in mixed failures were observed for the dentin specimens treated with the self-etch mode in the radiotherapy after the restoration group compared to the no-radiotherapy group, implying that the weak link was the bond between the resin and the dentin. No cohesive failures were observed for the enamel and dentin specimens with the self-etch mode, regardless of the irradiation protocol.

In this study, SEM observations of irradiated and non-irradiated specimens indicated signi-

ficant structural differences originating from the radiotherapy (Figure 2). Loss of the enamel prism structure and obliterated irregular dentinal tubules were found for the radiotherapy-treated specimens (Figure 2.B, Figure 2.D, Figure 2.F, and Figure 2.H). This finding agrees with Gonçalves *et al.*, (30) who reported that radiotherapy causes a more porous enamel surface. However, the tested irradiated and non-irradiated specimens did not differ in SBS values. Additionally, the morphological properties at the resin-enamel interface differed regarding the application modes. Resin tags were more visible in the irradiated enamel specimens treated with the etch-rinse mode compared to those treated with the self-etch mode (Figure 2.B and Figure 2.D), consistent with the increased cohesive failures for the radiotherapy before restoration group with the etch-rinse mode. Additionally, non-irradiated dentin specimens treated with the self-etch mode featured resin tag formations (Figure 2.G), whereas irradiated specimens had a thin hybrid layer appearance without resin tags (Figure 2.H). Amide monomers could penetrate deep into the demineralized dentin and polymerize to develop a stable polymer network, providing strong micromechanical interlocking (39). Thus, this finding could be attributed to the negative effects of radiotherapy on the collagen network (33).

Employing only superficial dentin surfaces along with enamel without any aging procedures may be considered a limitation of the current study. Thus, further studies are needed to focus on the effect of radiotherapy on the different properties of deep dentin, allowing for aging.

CONCLUSION

Despite the limitations of this study, the following conclusions can be drawn:

Irradiation with different timings did not influence the bond strength of the universal adhesive to enamel and dentin, negatively.

The etch&rinse mode caused higher bond strength to enamel than self-etch mode with both radiation protocols.

The predominant mode of failure was the mixed type for both substrates, regardless of the application modes and radiation protocol.

The SEM analysis indicated that the loss of the enamel prism structure and obliterated irregular dentinal tubules were found for the radiotherapy-treated specimens. Additionally, resin tags were clearer in the irradiated enamel specimens treated with the etch-rinse mode compared to the specimens treated with the self-etch mode.

AUTHOR CONTRIBUTION STATEMENT

Conceptualization and design: B.O., A.H.E., A.M., N.A., D.B.

Literature review: B.O., N.A.

Methodology and validation: B.O., N.A.

Formal analysis: B.O., N.A.

Investigation and data collection: B.O., D.B.

Data analysis and interpretation: B.O., N.A.

Writing: B.O., N.A.

Review & editing: B.O., N.A., A.M., D.B.

ACKNOWLEDGMENT

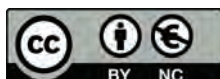
This *in vitro* study was supported by the Bezmialem Vakif University Research Fund (Project No:20200818). Many thanks to Prof. Dr. Evrim Dalkılıç who played an important role in my academic life. Many thanks to Assistant Professor Sevilay Karahan for her help with statistical analyses. This study was co-funded by Tokuyama Dental Corp. (Tokyo, Japan), Kuraray (Okayama, Japan) and 3M ESPE (St Paul MN, USA). The funders played no role in the design, conduction, evaluation or interpretation of the study, or in writing the manuscript. The authors do not have any financial interest in the companies whose materials are included in this article.

REFERENCES

1. Mehanna H., Paleri V., West C.M., Nutting C. Head and neck cancer - Part 1: Epidemiology, presentation and prevention. *BMJ*. 2010; 341: c4684. doi: 10.1136/bmj.c4684.
2. Paleri V. & Roland N. Introduction to the United Kingdom National Multidisciplinary Guidelines for Head and Neck Cancer. *J Laryngol Otol*. 2016; 130(Supplement 2)S3-4. <https://doi.org/10.1017/S0022215116000359>
3. National Cancer Registration and Analysis Service. Chemotherapy, Radiotherapy and Surgical Tumour Resections in England: 2013-2015 diagnoses, 2018 http://www.ncin.org.uk/cancer_type_and_topic_specific_work/topic_specific_work/main_cancer_treatments
4. Jensen S.B., Pedersen A.M.L., Vissink A., Andersen E., Brown C.G., Davies A.N. A systematic review of salivary gland hypofunction and xerostomia induced by cancer therapies: prevalence, severity and impact on quality of life. *Support Care Cancer*. 2010; 18 (8): 1039-60. <https://doi.org/10.1007/s00520-010-0827-8>
5. Hong C.H.L., Napeñas J.J., Hodgson B.D., Stokman M.A., Mathers-Stauffer V., Elting L.S. A systematic review of dental disease in patients undergoing cancer therapy. *Support Care Cancer*. 2010; 18 (8): 1007-21. <https://doi.org/10.1007/s00520-010-0873-2>
6. Harrington K., Nutting C., Newbold K., Bhide S. Principles and practice of head and neck surgery and oncology. 2nd ed. Chapman and Hall/CRC; 2009.
7. Kielbassa A.M., Hinkelbein W., Hellwig E., Meyer-Lückel H. Radiation-related damage to dentition. *Lancet Oncol*. 2006; 7: 326-335.
8. McGuire J.D., Gorski J.P., Dusevich V., Wang Y., Walker M.P. Type IV collagen is a novel DEJ biomarker that is reduced by radiotherapy. *J Dent Res*. 2014; 93 (10): 1028-1034.
9. Fränzel W., Gerlach R. The irradiation action on human dental tissue by X-rays and electrons-a nanoindenter study. *Z Med Phys*. 2009; 19 (1): 5-10.
10. Lieshout H.F.J., Bots C.P. The effect of radiotherapy on dental hard tissue-a systematic review. *Clin Oral Investig*. 2014; 18 (1):17-24. <https://doi.org/10.1007/s00784-013-1034-z>
11. Munoz M.A., Garin-Correa C., Gonzalez-Arriagada W., Davila X.Q., Haberle P., Bedran-Russo A. The adverse effects of radiotherapy on the structure of dental hard tissues and longevity of dental restoration. *Int J Radiat Biol*. 2020; 96 (7): 910-918.
12. Ozan G., Owda R., Bektas Kayhan K., Erdemir U. Microtensile bond strength of different bond strength of different modes of universal adhesives to radiotherapy-affected dentin. *J Adhes Sci Technol*. 2020; 35 (9): 901-912. <https://doi.org/10.1080/01694243.2020.1827849>
13. Ugurlu M. Effect of the double application of universal adhesives on the dentine bond strength after radiotherapy. *Aust Dent J*. 2020; 65 (3): 181-188.
14. Bulucu B., Avsar A., Demiryurek E.O., Yesilyurt C. Effect of radiotherapy on the microleakage of adhesive systems *J Adhes Dent*. 2009; 11 (4): 305-309
15. Hanabusa, M., Kimura S., Hori A., Yamamoto T. Effect of irradiation source on the dentin bond strength of a one-bottle universal adhesive containing an amide monomer. *J Adhes Sci Technol*. 2019; 33 (20): 2265-2280.
16. Suzuki M., Takamizawa T., Hirokane E., Ishii R., Tsujimoto, Barkmeier W.W. Bond durability of universal adhesives to intact

- enamel surface in different etching modes. *Eur J Oral Sci.* 2021; 129 (2): e12768. doi: 10.1111/eos.12768. Epub 2021 Mar 5
17. ISO-Standards. ISO 29022 Dentistry-Adhesion-Notched-edge shear bond strength test, ed 1. Geneva, Switzerland: International Organization for Standardization, 2013; 1-12.
 18. Cuncha S.R., Fonseca F.P., Ramos P.A., Haddad C.M.K., Fregnani E.R., Aranha A.C.C. Effects of different radiation doses on the microhardness, superficial morphology, and mineral components of human enamel. *Arch Oral Biol.* 2017; 80: 130-135.
 19. Murdoch-Kinch C.A., Zwetchkenbaum S. Dental management of the head and neck cancer patient treated with radiation therapy. *J Mich Dent Assoc.* 2011; 93 (7): 28-37.
 20. Sabatini C. Effect of a chlorhexidine-containing adhesive on dentin bond strength stability. *Oper Dent.* 2013; 38 (6): 609-17.
 21. Perdigão J., Lopes M.M., Gomes G. In vitro bonding performance of self-etch adhesives: II-ultramorphological evaluation. *Oper Dent.* 2008; 33(5): 534-49. <https://doi.org/10.2341/07-13330>
 22. Fitzmaurice C, Allen C, Barber RM, Barregard L, Bhutta ZA, Brenner H. Global, regional, and national cancer incidence, mortality, years of life lost, years lived with disability, and disability-adjusted life-years for 32 cancer groups, 1990 to 2015: a systematic analysis for the global burden of disease study. *JAMA Oncol.* 2017; 3(4):524–548.
 23. Yesilyurt C., Bulucu B., Sezen O., Bulut G., Çelik D. Bond strengths of two conventional glass-ionomer cements to irradiated and non-irradiated dentin. *Dent Mater J.* 2008; 27 (5): 695-701.
 24. Cunha S.R., Ramos P.A., Haddad C.M., Da Silva J.L.F., Fregnani E.R., Aranha A.C.C. Effects of different radiation doses on the bond strengths of two different adhesive systems to enamel and dentin. *J Adhes Dent* 2016; 18 (2): 151-156
 25. Madrid Troconis C.C., Santos-Silva A.R., Brandão T.B., Lopes M.A., de Goes M.F. Impact of head and neck radiotherapy on the mechanical behavior of composite resins and adhesive systems: a systematic review. *Dent Mater.* 2017; 33 (11): 1229-1243. <https://doi.org/10.1016/j.dental.2017.07.014>
 26. Arid J., Palma-Dibb R.G., de Oliveira H.F., Nelson-Filho P., Carvalho F.K., Silva LAB. Radiotherapy impairs adhesive bonding in permanent teeth. *Support Care Cancer.* 2020; 28 (1): 239-247.
 27. Morais-Faria K., Menegussi G., Marta G., Fernandes P.M., Dias R.B., Riberiro A.C.P. Dosimetric distribution to the teeth of patients with head and neck cancer who underwent radiotherapy. *Oral Surg Oral Med Oral Pathol Oral Radiol.* 2015; 120 (3): 416-419.
 28. Ogawa Y. Paradigm shift in radiation biology/radiation oncology-exploitation of the H2O2 effect for radiotherapy using low-LET (linear energy transfer) radiation such as X-rays and high-energy electrons. *Cancers (Basel)* 2016, 8 (3): 28 <http://dx.doi.org/10.3390/cancers8030028>.
 29. Martins C.V., Leoni G.B., Oliveira H.F., Arid J., Queiroz A.M., Silva LAB. Influence of therapeutic cancer radiation on the bond strength of an epoxy- or an MTA-based sealer to root dentine. *Int Endod. J* 2016; 49 (11): 1065-1072.
 30. Goncalves L.M., Palma-Dibb R.G., Paula-Silva F.W., Oliveira H.F., Nelson-Filho P. Silva LAB. Radiation therapy alters microhardness and microstructure of enamel and dentin of permanent human teeth. *J Dent.* 2014; 42 (8): 986-992.
 31. Yadav S., Yadav H. Ionizing radiation affects the microtensile resin dentin bond strength under simulated clinical conditions. *J Conserv Dent.* 2013; 16 (2): 148-51.

32. Gernhardt C.R., Kielbassa A.M., Hahn P., Schaller H.G. Tensile bond strengths of four different dentin adhesives on irradiated and non-irradiated human dentin in vitro. *J Oral Rehabil.* 2001; 28 (9): 814-20.
33. Naves L.Z., Novais V.R., Armstrong S.R., Correr-Sobrinho L., Soares C.J. Effect of gamma radiation on bonding to human enamel and dentin. *Support Care Cancer.* 2012; 20 (11): 2873-8.
34. Biscaro S.L., Moraes R.R., Correr A.B., Almeida S.M., Boscolo F.N., Soares C.J. Effect of X-ray radiation dose on the bond strength of different adhesive systems to dentin. *J Adhes Dent.* 2009; 11 (5): 355-60.
35. Yoshihara K., Hayakawa S., Nagaoka N., Okihara T., Yoshida Y., Van Meerbeek B. Etching efficacy of self-etching functional monomers. *J Dent Res.* 2018; 97 (9): 1010-1016.
36. Hanabusa, M., Kimura S., Hori A., Yamamoto T. Effect of irradiation source on the dentin bond strength of a one-bottle universal adhesive containing an amide monomer. *J Adhes Sci Technol* 2019; 33 (20): 2265-2280.
37. Sai K., Takamizawa T., Imai A., Tsujimoto A., Ishii R., Bark W.W. Influence of application time and etching mode of universal adhesives on enamel adhesion. *J Adhes Dent.* 2018; 20 (1): 65-77.
38. Armstrong S., Geraldeli S., Maia R., Raposo L.H. Soares C.J., Yamagawa J. Adhesion to tooth structure: A critical review of “micro” bond strength test methods. *Dent Mater.* 2010; 26 (2): e50-e62.
39. Saito T., Takamizawa T., Ishii R., Tsujimoto A., Hirokane E. Barkmeier W.W. Influence of application time on dentin bond performance in different etching modes of universal adhesives. *Oper Dent.* 2020; 45 (2): 183-195.



Attribution (BY-NC) - (BY) You must give appropriate credit, provide a link to the license, and indicate if changes were made. You may do so in any reasonable manner, but not in any way that suggest the licensor endorses you or your use. (NC) You may not use the material for commercial purposes.