

Received:  
30-VII-2022

Biomechanical and Chemical Behavior of Various Bioactive Materials in Class II Restorations

Accepted:  
5-IX-2022

Published Online:  
14-IX-2022

Desempeño biomecánico y químico de diferentes materiales bioactivos en restauraciones clase II

Juan Carlos Ramírez Barrantes DDS, MSD, PhD<sup>1</sup>; Francisco Javier Quesada Rojas DDS, MSD<sup>1</sup>

1. Departamento de Ciencias Restaurativas. Facultad de Odontología. Universidad de Costa Rica, San José, Costa Rica.

Correspondence to: Dr. Juan Carlos Ramírez Barrantes - [juan.ramirez@ucr.ac.cr](mailto:juan.ramirez@ucr.ac.cr)

**ABSTRACT:** The aim of this *in vitro* study was to evaluate the biomechanical and chemical behavior of various bioactive materials in class II MOD restorations. Forty-eight standardized class II MOD cavities were prepared in sound extracted human molar teeth. The specimens were divided into four groups according to the restorative material: Group 1 (Filtek™ Z350 XT), Group 2 (Biodentine™ as a liner, and then restored with Filtek™ Z350 XT), Group 3 (Cention N™), and Group 4 (Activa™ Bioactive-Restorative). The samples were tested for fracture resistance by subjecting them to a compressive load in a Universal testing Machine. The failure modes of each specimen were evaluated. The alkalinizing potential and calcium ion release of the materials were measured. SEM-EDAX analyses were also performed for all materials. Data were analyzed using ANOVA and post hoc Tukey test ( $p < 0.05$ ). Group 1 showed the higher fracture resistance ( $p < 0.05$ ). Group 3 had greater fracture resistance values but no statistical difference from Group 4. Biodentine™ showed greater biomineralization potential. Class II MOD restorations of Group 1 displayed the higher fracture resistance; however, it was highly associated with catastrophic failure. Conversely, Biodentine™ presented a more significant bioactivity potential, and its use, as in Group 2, promoted the most favorable failure mode.

**KEYWORDS:** Bioactive materials; Class II restorations; Composite resins; Fracture resistance.

RESUMEN: El objetivo de este estudio, *in vitro*, fue evaluar el desempeño biomecánico y químico de varios materiales bioactivos en restauraciones clase II MOD. Se prepararon cuarenta y ocho cavidades clase II MOD estandarizadas en dientes molares humanos extraídos. Las muestras se dividieron en cuatro grupos según el material de restauración: Grupo 1 (Filtek™ Z350 XT), Grupo 2 (Biodentine™ como base y luego restaurado con Filtek™ Z350 XT), Grupo 3 (Cention N™) y Grupo 4 (Activa™ Bioactivo-Reparador). La prueba de resistencia a la fractura fue realizada en una máquina de ensayo universal Instron. Se evaluaron los modos de falla de cada espécimen. Se midió el pH y la liberación de iones de calcio de los materiales. Se realizaron análisis SEM-EDAX. Los datos se analizaron mediante ANOVA y la prueba post hoc de Tukey ( $p < 0,05$ ). El grupo 1 mostró la mayor resistencia a la fractura ( $p < 0,05$ ). El Grupo 3 tuvo mayores valores de resistencia a la fractura que el Grupo 4, pero sin diferencia estadística. Biodentine™ mostró un mayor potencial de biomineralización. Las restauraciones Clase II MOD del Grupo 1 mostraron la mayor resistencia a la fractura; sin embargo, estuvo altamente asociado con fallas irreparables. Por el contrario, Biodentine™ presentó un potencial de bioactividad más significativo y su uso, como en el Grupo 2, promovió el modo de falla más favorable.

PALABRAS CLAVE: Materiales bioactivos; Restauraciones clase II; Resinas compuestas; Resistencia a la fractura.

## INTRODUCTION

In recent years, amalgam, once the predominant restorative material, has been replaced by tooth color-like materials, such as composite resins, which offer aesthetic advantages and more conservative preparation techniques (1). Composite resin restorations in posterior teeth have shown annual failure rates ranging from 1 to 8%, and the main reasons for replacement being the presence of fractures and secondary caries (2,3). Thus, the technological improvement of restorative materials and adhesive techniques has been observed in literature, focusing on developing alternative clinical possibilities.

In order to improve the biochemical interaction properties of the materials with dental tissues and decrease the replacement rate due to secondary caries, some chemical and structural modifications have been proposed. Evidence showed that calcium, phosphate, and fluoride ions are associated with increasing the resistance of tooth tissue to

acid attack and biomineralization of dentin (4-8). The release of fluoride ions saturates the liquid phase in the restoration-dentin interface, resulting in the precipitation of  $\text{CaF}_2$  crystals, which have been advocated to negatively affect bacterial metabolism (9) and enhance remineralization (4). Recent evidence suggests that the remineralization of dentin can be achieved with the aid of bioactive materials that promotes calcium ion release (10,11).

Thus, a new generation of bioactive materials has been developed and introduced commercially, as a result of a continuous evolution in dental materials sciences. Biodentine™ is attributed as one of the first bioceramic successfully introduced in dentistry, and is marketed as a replacement material for coronal and root dentin. The composition of Biodentine™ consists of tricalcium silicate, zirconium oxide, and some other additives, such as calcium carbonate, which is added to the powder, and calcium chloride, which is added to the liquid to accelerate the setting reaction

(12). Likewise, ACTIVA™ Bioactive Restorative is described as a hydrophilic resin-based bioactive self-adhesive material that stimulates hydroxyapatite formation and natural remineralization at the tooth-material interface by releasing significant amounts of calcium, phosphate, and fluoride (4,13). Moreover, Cention N™ has been introduced as a powder-liquid filling material containing alkaline glass fillers, capable of releasing fluorides, calcium, and hydroxide ions, and can be used as a bulk material (14,15).

Class II resin composite restorations primary causes of failure are recurrent caries (8), tooth fracture (16), restoration fracture (17), and post-operative sensitivity (18). Previous retrospective and prospective clinical studies have shown that caries and fractures are the main reasons for the replacement of this type of restorations (19). Moreover, studies reported that the risk of marginal ridge fracture could be influenced by the technique and the material used in Class II restorations (16,19-21). Consequently, the fracture resistance of restorative materials is a critical factor for the clinical success of Class II MOD restorations. Up to date, there is no study evaluating the fracture resistance and some biomineralization characteristics of these materials. Thus, the objective of our study was to evaluate the biomechanical and chemical behavior of various bioactive materials in class II restorations. The null hypothesis was that there is no difference in the fracture resistance of MOD restorations and calcium ion release between the tested materials.

## MATERIALS AND METHODS

The research protocol was approved by the Ethics Committee of Universidad de Costa Rica (CEC-388-2021).

## SAMPLE PREPARATION

Forty-eight (n=48) freshly extracted non-carious human molars, stored in 37 °C distilled water, were used. Teeth were cleaned with periodontal cures to remove residual plaque, soft tissue remnants and calculus. All teeth were evaluated carefully for cracks, caries, wear facets or structural defects under a stereomicroscope (Nikon SMZ645, Tokyo, Japan) at ×20 magnification. Moreover, the dimensions of the teeth were measured with a digital caliper (Mitutoyo, Tokyo, Japan) to ensure that the selected teeth presented an occlusal surface area varying no more than 10% of the sample average.

The teeth were inserted into a PVC cylinder with polystyrene resin (Polyether Impregum soft 3M ESPE, Minnesota, USA) with the cementum-enamel junction (CEJ) 2mm above the surface of the acrylic resin. Each tooth was positioned in a block so that buccal and lingual cusp tips were in a horizontal plane parallel to the base of the mount.

Standardized MOD preparations were performed using a high-speed handpiece under water cooling. The cavities were prepared using bur #2131 (KD Sorensen, Sao Paulo, Brazil), and the burs were changed every 4 teeth (16). The class II MOD cavities were performed by a single operator and, standardized as follows: lingual-buccal isthmus width of 4mm and occlusal depth of 3mm, in the proximal box 4mm of occlusal depth, and 1-2mm above the cemento-enamel junction of the proximal box (mesially and distally).

The specimens were randomly divided into four groups (n=10) according to the bioactive materials placement techniques.

Group 1 (control group): After preparing the cavity, a metal matrix held by a Tofflemire retainer (S.S. White Dental Manufacturing Company, Philadelphia, USA) was placed around the tooth. A universal adhesive employing the selective etching technique (Single Bond™ Universal, 3M ESPE, Deutschland, Germany) was applied on the cavities with a disposable microbrush according to the manufacturer's instructions. Light curing was performed using a light-emitting diode light-curing unit (Valo, Ultradent Products Inc., South Jordan, UT, USA) for 20s, with a light intensity of 1200 mW/cm. Successive increments (2mm) of a nano-filled resin composite (Filtek™ Z350 XT, 3M ESPE, Minnesota, USA) were first applied horizontal to the gingival wall, and then, to the pulpal wall. The final increment was applied according to the contour of the tooth. All the increments were light-cured separately. Immediately after filling, the samples were finished with diamond burs at low speed with air-water spray and polished with a disc system (OptiDisc System, Kerr Corporation, Orange, CA, USA).

Group 2: The axial, pulpal and gingival walls of each Class II cavity were lined (2mm) with Biodentine™ (Septodont (Saint-Maur-des-Fossés, France) using a 1mm diameter ballpoint instrument. The matrix band was placed and secured using a Tofflemire matrix retainer. The remainder of the cavity was then treated with the universal adhesive and restored with the composite resin at full contour until replacing the enamel, as described for Group 1.

Group 3: A matrix band was placed and secured also using a Tofflemire matrix retainer, and the cavity was then restored at full contour with Cention N™ (Ivoclar Vivadent, Liechtenstein, Germany) according to the manufacturer's instructions.

Group 4: A matrix band was also placed and secured using a Tofflemire matrix retainer and the cavity was then restored at full contour with Activa™

Bioactive-Restorative (Pulpdent, Watertown, MA, USA) according to the manufacturer's instructions.

The teeth were stored at 37°C and 100% humidity in calcium-free PBS for 7 days.

#### FRACTURE RESISTANCE AND FRACTURE MODE EVALUATION

The samples were submitted to a compressive load until fracture (load cell capacity 5kN), with a stainless-steel ball bearing of 6mm in diameter, in a universal testing Machine (Electropuls E 3000, Instron Corporation, Norwood, MA, USA) at a cross-head speed of 5mm/min until specimen fracture. The failure modes of each specimen were assigned to one of four categories and assessed by a single-blinded calibrated evaluator (22): (I) Failure at the restorative material; (II) Failure at the restorative material and coronal tooth structure; (III) Failure at the restorative material and cervical tooth structure with possible periodontal repair and (IV) severe root and crown failure, which were deemed non-restorable. Representative failures/fractures modes were photographed.

#### STATISTICAL ANALYSIS

Fracture loads were recorded in Newtons (N) and analyzed using an analysis of variance (ANOVA) followed by post-hoc Tukey's Test at a level of significance of  $p < 0.05$ . The data for fracture patterns are reported, only, as descriptive. The statistical analysis was performed using Prism 9 GraphPad (GraphPad Software Inc., San Diego, CA, USA).

#### SCANNING ELECTRON MICROSCOPY (SEM)

Two random specimens from each group were selected for SEM observation. Each specimen was then sectioned, at the half, parallel to the longitudinal axis of the crown using an ISOMET diamond saw (Buehler, Lake Bluff, NY, USA). Speci-

mens were dried at room temperature, mounted on an aluminium stub, placed in sealed glass vials with silica and then in a vacuum chamber, and sputter-coated with a 300Å gold layer. The elemental composition of the materials was analyzed by energy-dispersive X-ray analysis (EDAX) with a scanning electron microscope (S-570, Hitachi, Tokyo, Japan) at 15kV. Serial SEM photomicrographs at different magnifications were taken to descriptively analyze the dentin-material interface.

#### DETERMINATION OF PH AND CALCIUM ION RELEASE

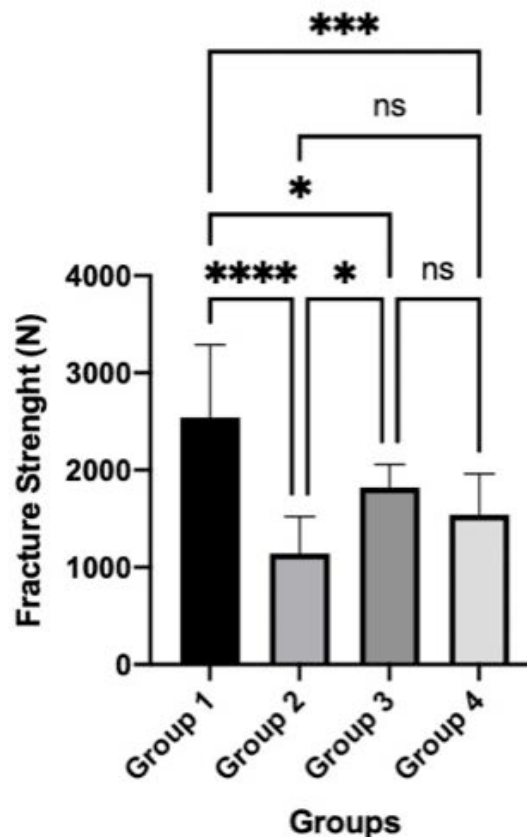
Specimens from all the experimental materials (n=5) were placed separately in sterile vials and immersed in a calcium-free and magnesium-free phosphate-buffered saline (PBS) solution at 37°C for 1 month. The PBS solution was collected at 30 days to measure the pH and calcium ion release. After the collection of the solution, the pH was determined with a pH meter (Orion Star A 221, Waltham, MA, USA). Calcium ion release was measured using a Varian atomic absorption spectrophotometer (Spectra A220 Fast Sequential, Palo Alto, CA, USA). Data obtained were recorded and subjected to descriptive analysis.

#### RESULTS

The means and standard deviation of the load required to fracture the Class II restorations of each of the four groups are displayed in Table 1 and Figure 1. Group 1 (Filtek™ Z350 XT) recorded the highest average load, while Group 2 restorations (Biodentine™/Filtek™ Z350 XT) had the lowest fracture load ( $p < 0.05$ ). Group 1 displayed statistical differences with all groups ( $p < 0.05$ ). Group 3 showed numerically higher fracture resistance than Group 4; however, no statistically significant differences were detected among them.

**Table 1.** Mean and standard deviation (SD) of the fracture resistance of Class II restorations test.

Group	Mean	SD
Group 1 (Filtek™ Z350 XT)	2540	345.9
Group 2 (Biodentine™/ Filtek™ Z350 XT)	1142	280.4
Group 3 (Cention N™)	1821	239.0
Group 4 (Activa™)	1541	321.0



**Figure 1.** Means and standard deviations for fracture resistance loads (N) \*Indicate statistical differences between groups.

The modes of fracture of all the groups are described in Figure 2 and Figure 3. Group 1 displayed most samples with root failure beyond repair (60%) and failure at restorative material and cervical structure (40%). In Group 3, a mixed-

mode of failure was observed, being predominant in categories 2 (40%), 3 (40%) and 4 (20%). Group 4 showed 30% of the samples with failure at category 3, 60% at category 2, 10% at category 1, and just one sample with root failure beyond repair.

The chemical compositions by EDAX of the tested materials are described in Figure 4. Bioden-

tine™ showed Ca and Si at higher concentrations compared to the other materials. Filtek™ Z350 XT presented Si in higher concentrations than other components. Cention N™ and Activa™ denoted an intermediate amount of Ca and the presence of Si.

SEM evaluation showed material-dentin interface (Figure 5). Biodentine™ showed a more homogeneous marginal adaptation with dentin and a more porous surface.

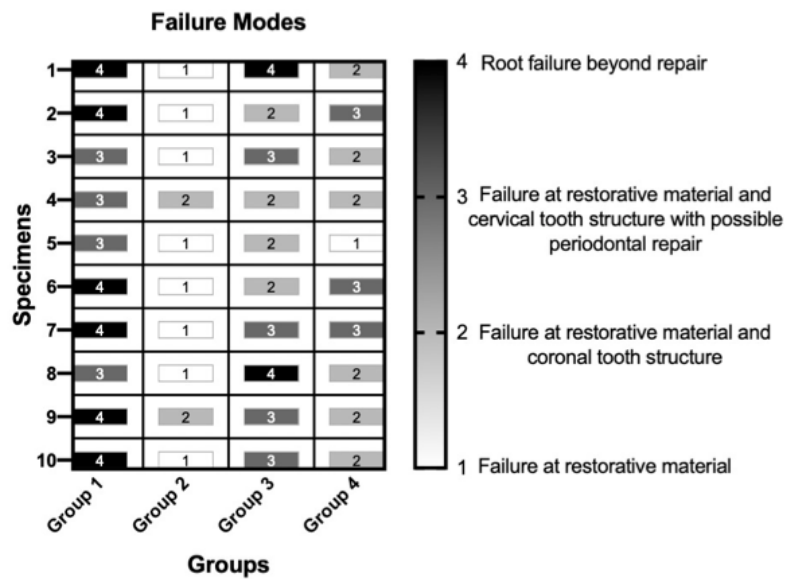
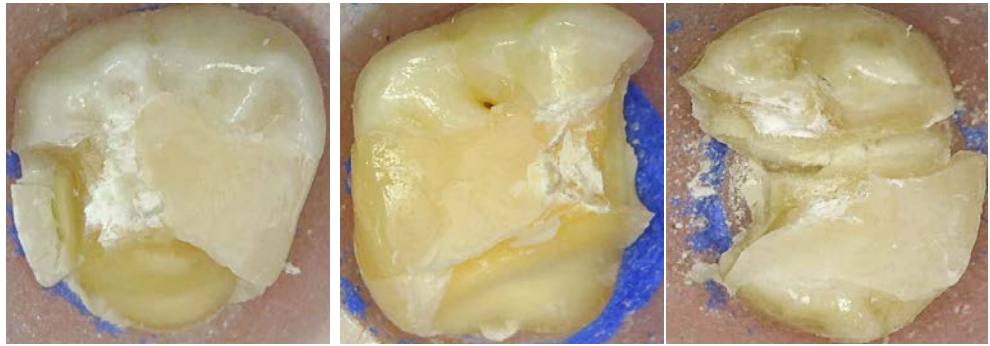


Figure 2. Distribution of the failure modes for all groups.

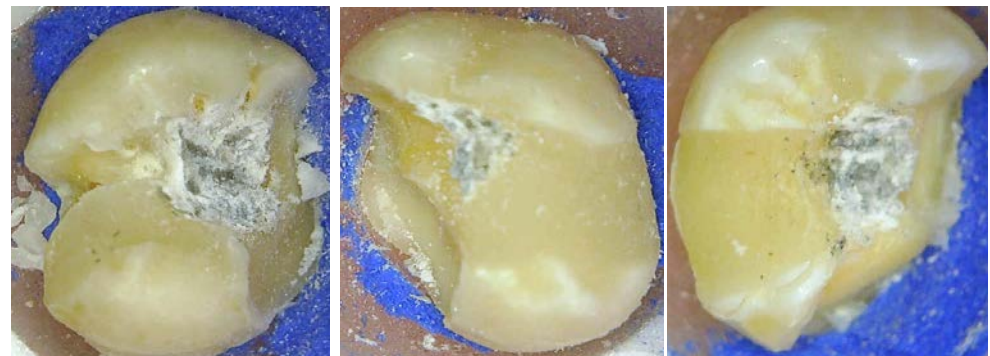
Group 1



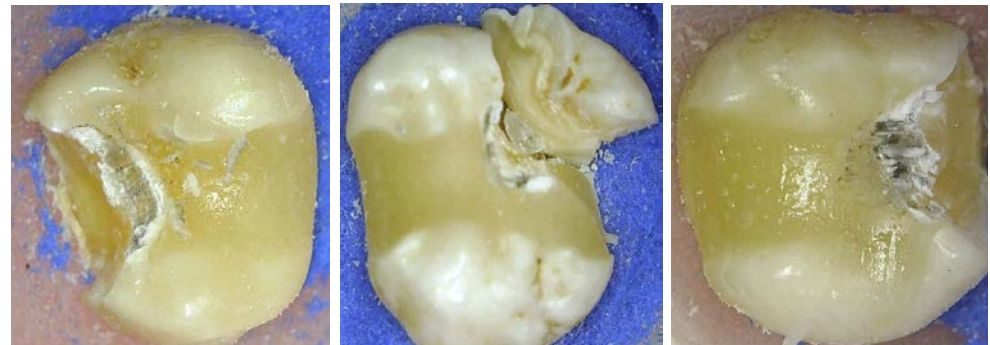
Group 2



Group 3



Group 4



**Figure 3.** Representative failure types in each group.

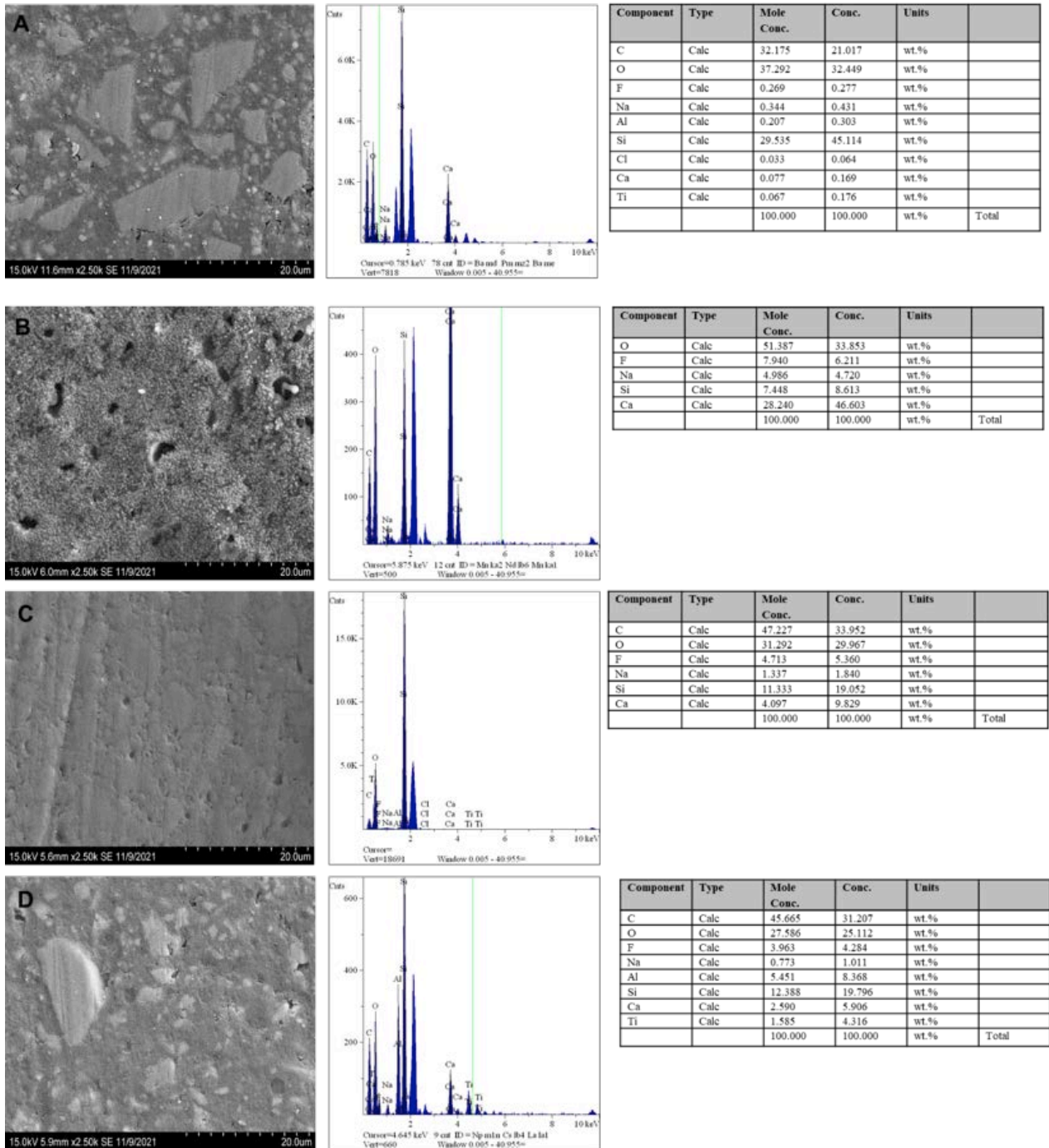
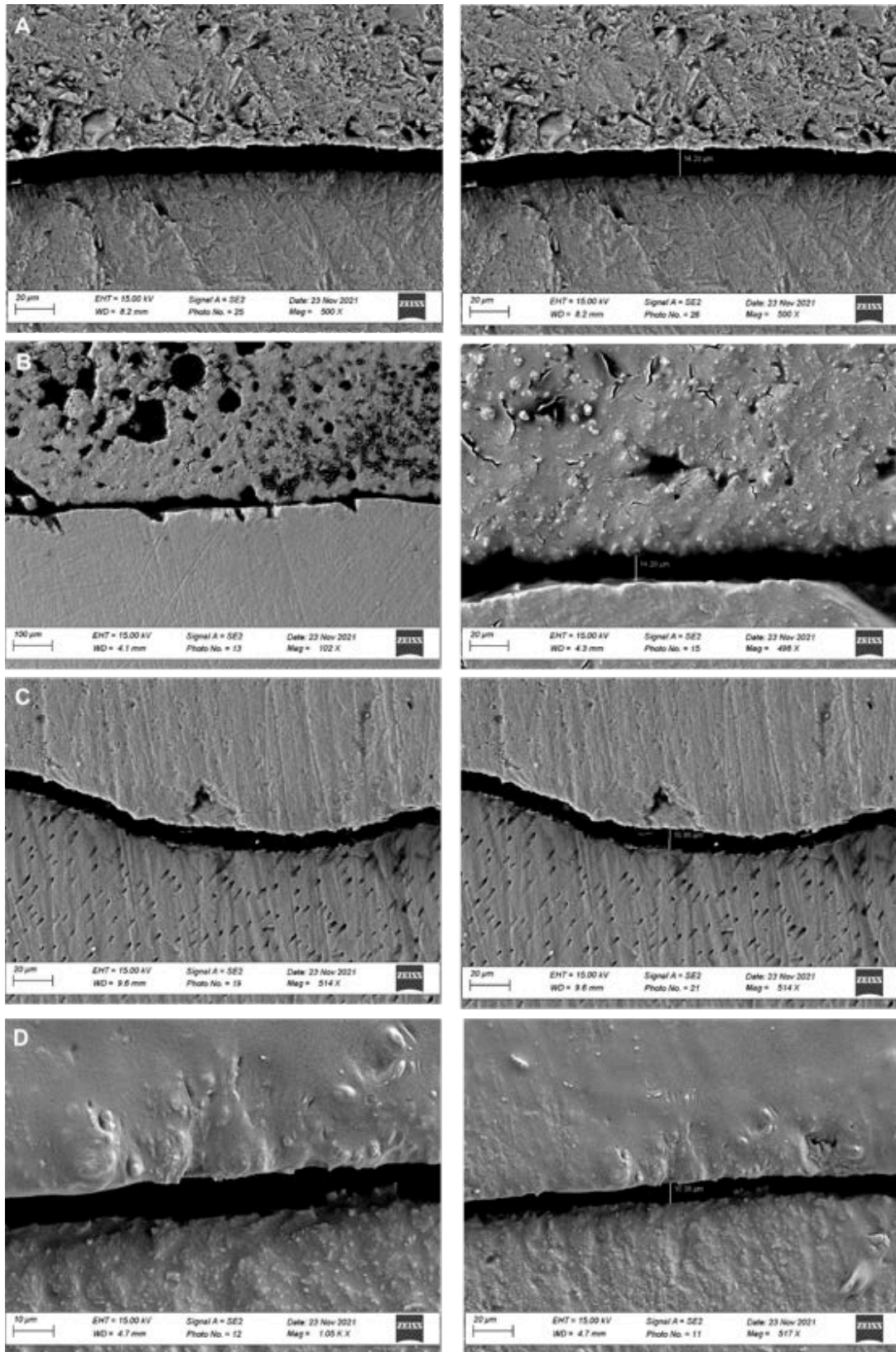


Figure 4. EDAX spectrum for (a) Filtek™ Z350 XT, (b) Biodentine™/ Filtek™ Z350 XT, (c) Cention N™, and (d) Activa™.





**Figure 5.** Representative SEM microphotograph of material-dentin interface. (A) Filtek™ Z350 XT, (B) Biodentine™/ Filtek™ Z350 XT, (C) Centon N™, and (D) Activa™.

Regarding the pH, all the bioactive materials showed a rapid initial rise from days 1-7 followed by a decline on day 30. Biodentine™ presented higher alkalinizing activity than the other materials. Filtek™ Z350 XT remained near 7.2.

All the materials showed the ability to release calcium ions. Biodentine™ released the highest cumulative amount of calcium ( $576\pm 36$ mg/L). Cention N™ and Activa™ displayed  $10\pm 1$ mg/L and  $12\pm 1$ mg/L, respectively. Filtek™ Z350 XT showed a lower cumulative amount of calcium ions ( $4\pm 1$ mg/L).

## DISCUSSION

Increasing demand for esthetics and enduring restorations has led dental researchers to focus on the development of novel materials that can display optimal physical, mechanical, and biological properties. Our study was designed to assess the performance in Class II MOD restorations, alkalinity potential, and calcium ion release of some bioactive materials. It was possible to observe a significant difference in all tests between the materials, leading to the rejection of the null hypothesis.

Several studies have investigated the fracture resistance of Class II MOD restorations because of their clinical relevance (1,2,22-24). However, to our knowledge, this is the first study that correlates the performance of these bioactive materials in class II restorations and their ion release capacity.

Materials incorporating agents that possess bioactivity and promote remineralization of the tooth by releasing calcium, phosphate, and fluoride ions are examples of the trend to develop aesthetic restoratives with the ability to inhibit secondary caries (4). Previous studies reported that bioactive materials release some components in the medium and trigger mineral deposition, which leads to the formation of an interfacial layer with tag-like

structures in the intratubular dentin, suggesting that this biomineralization process could minimize leakage (7) and positively influence the bond strength of the materials (25,26). This micromechanical interaction induced by calcium silicate biomaterials improves the adhesion between materials and dentin (18,25-27). Our results demonstrated that the alkalinization potential and calcium ion release of Biodentine™ ( $576\pm 36$  mg/L) were much higher than the other materials tested. Cention N™ ( $10\pm 1$ mg/L) and Activa™ ( $12\pm 1$ mg/L) displayed unsatisfactory results, considering both materials' marketing. The ability of bioactive materials to promote the biomineralization process in their interface with dentin was previously correlated to the rate of calcium ion release (25,28). Thus, we suggest that the higher amounts of calcium ions released by Biodentine™, due to the major calcium content as noted by SEM-EDAX, imply greater biomineralization potential in the dentin-material interface.

Class II restorations have always provided a restorative dilemma due to the presence of recurrent caries, tooth/restoration fractures, discoloration, polymerization shrinkage, and post-operative sensitivity (16). Therefore, this study reveals new alternatives for the restoration of posterior teeth. Our results demonstrated that class II MOD restorations filled with Filtek™ Z350 XT showed the higher fracture resistance of all materials tested. Cention N™ displayed higher numerical fracture resistance than Activa™; however, no significant differences were observed. The lowest fracture resistance values were displayed by Group 2, in which Biodentine™ was used as a liner or pulp capping material, and then, Filtek™ Z350 XT was used to restore enamel (Group 2).

Regarding the performance of new materials, Van Dijken *et al.* demonstrated, in a randomized controlled prospective clinical trial, that the annual failure rate of Activa™ was 24.1% versus 2.5% for a resin composite (4). The authors stated that the

main reasons for failure were fractured restorations, postoperative symptoms, and secondary caries. Moreover, this clinical study was stopped due to the unacceptable, very high one-year failure frequency, and no further evaluation was performed. Thus, the authors concluded that the use of Activa™ in Class II cavities, applied as instructed by the manufacturer after a short phosphoric acid pretreatment but without adhesive system, resulted in a non-acceptable, very high failure frequency after one year (4). In contrast, Cention N™ showed, *ex vivo*, adequate but lesser strength, and flexural values than composite resins (20,29), but with minor microleakage (20).

Composite resins with a higher elastic modulus produce more rigid restorations, which may transmit a higher load to the underlying tooth structure (22,30). Cention N™(31-33), Activa™(34), and Biodentine™(35) presented lower elastic modulus and shrinkage stress than resin composite-based materials. Class II restorations are often associated with clinical failure due to the high shrinkage stress at the restorative composite/adhesive interface (22). In this sense, group 1 restorations presented a higher fracture resistance and a greater incidence of root and crown failure, probably because of the higher elastic modulus of the resin composite material, and shrinkage stress values at the cavity walls (16,22,36). Consequently, after axial compressive loading, the cohesive fracture in the composite occurred concurrently to the root and crown (22). Therefore, the highest elastic modulus of a material, due to a higher filling load, has led to the need for higher compressive loading until the restoration fracture, which causes force propagation to the tooth and higher catastrophic cohesive crown/root fractures (16,22,36). Considering the failure mode results of this study, we can conclude that samples of group 2 displayed, from a clinical perspective, the most favorable failure mode. It is assumed that the material with higher resistance to fracture could obtain better clinical perfor-

mance. However, based on our results, we can extrapolate that the use of a bioactive liner/pulp capping material with composite resin can be the ideal mode of restoration to approach the benefits of this bioactivity potential, marginal adaptation and the bond strength of composites resins. Furthermore, a more beneficial mode of failure can permit tooth rehabilitation and survival. Suitable physicochemical properties have been described for all the bioactive materials; however, additional research to assess the biological interaction and bond strength in a simulated oral environment may provide information to improve the clinical performance of Class II MOD restorations.

## CONCLUSION

Within the limitations of this *in vitro* study, it can be concluded that higher resistance to fracture of Class II MOD restorations was obtained when an incremental filling technique with composite resin was used; however, it was highly associated with catastrophic failure. Conversely, Biodentine™ presented a more significant bioactivity potential, and its use as a liner, in addition to composite resin, promoted the most favorable failure mode.

## AUTHOR CONTRIBUTION STATEMENT

Contributed equally in all stages of this study: J.C.R.B. and F.J.Q.R.

## REFERENCES

1. Silva P.F.D., Oliveira L.R.S., Braga S.S.L., Signori C., Armstrong S.R., Soares C.J., et al. Effect of selective carious tissue removal on biomechanical behavior of class II bulk-fill dental composite restorations. *Dental Materials*. 2018 Sep 1; 34 (9): 1289-98.
2. Heintze S.D., Monreal D., Peschke A. Marginal Quality of Class II Composite Restorations Placed in Bulk Compared to an Incremental Technique: Evaluation with SEM and

- Stereomicroscope. *J Adhes Dent.* 2015; 17 (2): 147-54.
3. Ástvaldsdóttir Á., Dagerhamn J., van Dijken J.W.v, Naimi-Akbar A., Sandborgh-Englund G., Tranæus S., et al. Longevity of posterior resin composite restorations in adults-A systematic review. *J Dent.* 2015 Aug; 43 (8): 934-54.
  4. van Dijken J.W.V., Pallesen U., Benetti A. A randomized controlled evaluation of posterior resin restorations of an altered resin modified glass-ionomer cement with claimed bioactivity. *Dental Materials.* 2019 Feb 1; 35 (2): 335-43.
  5. Retana-Lobo DDS M.C., Reyes-Carmona DDS MP J. Ex Vivo Evaluation of a Restoration Protocol for Teeth with Simulated Incomplete Rhizogenesis. *Odovtos - International Journal of Dental Sciences.* 2019 Nov 11; 293-307.
  6. Reyes-Carmona DDS MP J., Santos PhD A., Cordeiro DDS P.M. Mineral Trioxide Aggregate and Calcium Hydroxide Promotes In Vivo Intratubular Mineralization. *Odovtos - International Journal of Dental Sciences.* 2016 Mar 17; 18 (1): 49.
  7. Reyes-Carmona J.F., Felipe M.S., Felipe W.T. Biomineralization ability and interaction of mineral trioxide aggregate and white portland cement with dentin in a phosphate-containing fluid. *J Endod.* 2009 May; 35 (5): 731-6.
  8. Ebaya M.M., Ali A.I., Mahmoud S.H. Evaluation of Marginal Adaptation and Microleakage of Three Glass Ionomer-Based Class v Restorations: In Vitro Study. *European Journal of Dentistry.* 2019; 13 (4): 599-606.
  9. Persson A., Claesson R., van Dijken J.W.v. Levels of mutans streptococci and lactobacilli in plaque on aged restorations of an ion-releasing and a universal hybrid composite resin. *Acta Odontol Scand.* 2005 Feb; 63 (1): 21-5.
  10. Retana-Lobo C., Tanomaru-Filho M., Guerreiro-Tanomaru J.M., Benavides-García M., Hernández-Meza E., Reyes-Carmona J. Push-Out Bond Strength, Characterization, and Ion Release of Premixed and Powder-Liquid Bioceramic Sealers with or without Gutta-Percha Scanning. 2021 May 6; 2021: 1-12.
  11. Retana-Lobo C., Guerreiro-Tanomaru J.M., Tanomaru-Filho M., Mendes de Souza B.D., Reyes-Carmona J. Non-Collagenous Dentin Protein Binding Sites Control Mineral Formation during the Biomineralisation Process in Radicular Dentin. *Materials (Basel).* 2020 Feb 27; 13 (5).
  12. Malkondu Ö., Karapinar Kazandağ M., Kazazoğlu E. A review on biodentine, a contemporary dentine replacement and repair material. *Biomed Res Int.* 2014; 2014: 160951.
  13. Bansal R., Burgess J., Lawson N.C. Wear of an enhanced resin-modified glass-ionomer restorative material. *Am J Dent.* 2016 Jun; 29 (3): 171-4.
  14. Kumari A., Singh N. A comparative evaluation of microleakage and dentin shear bond strength of three restorative materials. *Biomater Investig Dent.* 2022; 9 (1): 1-9.
  15. Singla T., Pandit I.K., Srivastava N., Gugnani N., Gupta M. An evaluation of microleakage of various glass ionomer based restorative materials in deciduous and permanent teeth: An in vitro study. *Saudi Dent J.* 2012 Jan; 24 (1): 35-42.
  16. Bonilla E.D., Hayashi M., Pameijer C.H., Le N.v., Morrow B.R., Garcia-Godoy F. The effect of two composite placement techniques on fracture resistance of MOD restorations with various resin composites. *Journal of Dentistry.* 2020 Oct 1; 101:103348.
  17. Al-Nahedh H.N. Effects of Resin-Modified Glass Ionomer Cement and Flowable Bulk-Fill Base on the Fracture Resistance of Class II Restorations: An Original Laboratory

- Experimental Study. *Journal of Contemporary Dental Practice*. 2021 Apr 1; 22 (4): 342-8.
18. Silva E.J.N.L., Canabarro A., Andrade M.R.T.C., Cavalcante D.M., von Stetten O., Fidalgo T.K. da S., et al. Dislodgment Resistance of Bioceramic and Epoxy Sealers: A Systematic Review and Meta-analysis. *J Evid Based Dent Pract*. 2019; 19 (3): 221-35.
  19. Demarco F.F., Corrêa M.B., Cenci M.S., Moraes R.R., Opdam N.J.M. Longevity of posterior composite restorations: not only a matter of materials. *Dent Mater*. 2012 Jan; 28 (1): 87-101.
  20. Sujith R., Yadav T.G., Pitalia D., Babaji P., Apoorva K., Sharma A. Comparative Evaluation of Mechanical and Microleakage Properties of Cention-N, Composite, and Glass Ionomer Cement Restorative Materials. *J Contemp Dent Pract*. 2020 Jun 1; 21 (6): 691-5.
  21. Al-Nahedh H.N. Effects of Resin-Modified Glass Ionomer Cement and Flowable Bulk-Fill Base on the Fracture Resistance of Class II Restorations: An Original Laboratory Experimental Study. *Journal of Contemporary Dental Practice*. 2021 Apr 1; 22 (4): 342-8.
  22. Lins R.B.E., Aristilde S., Osório J.H., Cordeiro C.M.B., Yanikian C.R.F., Bicalho A.A., et al. Biomechanical behaviour of bulk-fill resin composites in class II restorations. *Journal of the Mechanical Behavior of Biomedical Materials*. 2019 Oct 1; 98: 255-61.
  23. Nothdurft F.P., Seidel E., Gebhart F., Naumann M., Motter P.J., Pospiech P.R. Influence of endodontic posts on the fracture behavior of crowned premolars with class II cavities. *Journal of Dentistry*. 2008; 36 (4): 287-93.
  24. Ebru Kucukyilmaz et al. Effects of pulp capping materials on fracture resistance of Class II composite restorations. *Eur J Dent* 2015; 09 (02): 218-223.
  25. Retana-Lobo C., Tanomaru-Filho M., Guerreiro-Tanomaru J.M., Benavides-García M., Hernández-Meza E., Reyes-Carmona J. Push-Out Bond Strength, Characterization, and Ion Release of Premixed and Powder-Liquid Bioceramic Sealers with or without Gutta-Percha. *Scanning*. 2021 May 6; 2021: 1-12.
  26. Reyes-Carmona J.F., Felipe M.S., Felipe W.T. The biomineralization ability of mineral trioxide aggregate and Portland cement on dentin enhances the push-out strength. *J Endod*. 2010 Feb; 36 (2): 286-91.
  27. Torabinejad M., Watson T.F., Pitt Ford T.R. Sealing ability of a mineral trioxide aggregate when used as a root end filling material. *J Endod*. 1993 Dec; 19 (12): 591-5.
  28. Prüllage R.K., Urban K., Schäfer E., Dammaschke T. Material Properties of a Tricalcium Silicate-containing, a Mineral Trioxide Aggregate-containing, and an Epoxy Resin-based Root Canal Sealer. *J Endod*. 2016 Dec; 42 (12): 1784-8.
  29. Rajaraman G., Senthil Eagappan A.R., Bhavani S., Vijayaraghavan R., Harishma S., Jeyapreetha P. Comparative Evaluation of Fracture Resistance of Fiber-Reinforced Composite and Alkaside Restoration in Class I Cavity. *Contemp Clin Dent*. 13 (1): 56-60.
  30. Rosatto C.M.P., Bicalho A.A., Veríssimo C., Bragança G.F., Rodrigues M.P., Tantbirojn D., et al. Mechanical properties, shrinkage stress, cuspal strain and fracture resistance of molars restored with bulk-fill composites and incremental filling technique. *J Dent*. 2015 Dec; 43 (12): 1519-28.

31. Naz F., Samad Khan A., Kader M.A., al Gelban LO.S., Mousa N.M.A., Asiri R.S.H., et al. Comparative evaluation of mechanical and physical properties of a new bulk-fill alkasite with conventional restorative materials. *Saudi Dent J.* 2021 Nov; 33 (7): 666-73.
32. Balagopal S., Nekkanti S., Kaur K. An In Vitro Evaluation of the Mechanical Properties and Fluoride-releasing Ability of a New Self-cure Filling Material. *J Contemp Dent Pract.* 2021 Feb 1; 22 (2): 134-9.
33. Younis S., Alaa E. Flexural Strength and Modulus of Elasticity of Two Base Materials. An In vitro Comparative study. *Egyptian Dental Journal.* 2020 Jul 1; 66 (3): 1837-43.
34. Garoushi S., Vallittu P.K., Lassila L. Characterization of fluoride releasing restorative dental materials. *Dent Mater J.* 2018 Mar 30; 37 (2): 293-300.
35. Choudhury W.R., Nekkanti S. Mechanical Properties of SDR™ and Biodentine™ as Dentin Replacement Materials: An In Vitro Study. *J Contemp Dent Pract.* 2022 Jan 1; 23 (1): 43-8.
36. Asmussen E., Peutzfeldt A. Class I and Class II restorations of resin composite: an FE analysis of the influence of modulus of elasticity on stresses generated by occlusal loading. *Dent Mater.* 2008 May; 24 (5): 600-5.

